

ADAM'S

ESTD 1887



SUNDAY 21ST FEBRUARY 2016 AT 12 NOON

FINE PERIOD INTERIORS AUCTION

CONTACTS



Brian Coyle FSCSI FRICS
CHAIRMAN



James O'Halloran BA FSCSI FRICS
MANAGING DIRECTOR
j.ohalloran@adams.ie



Stuart Cole MScSI MRICS
DIRECTOR
s.cole@adams.ie



David Britton BBS ACA
DIRECTOR
d.britton@adams.ie



Nick Nicholson
CONSULTANT
n.nicholson@adams.ie



Kieran O'Boyle BA HDip ASCSI
ASSOCIATE DIRECTOR
k.boyle@adams.ie



Ronan Flanagan
FINE ART DEPARTMENT
ronan@adams.ie



Katie McGale BComm Intl MPhil
FINE ART DEPARTMENT
katie@adams.ie



Amy McNamara BA
FINE ART DEPARTMENT
amymcnamara@adams.ie

CREATE A 'MY ADAM'S' ACCOUNT

You can now create your own account with us by signing up and registering your particulars online at www.adams.ie

The process involves uploading identification by way of passport or driving license and supplying valid credit card information. This is a once off request for security purposes, and once the account is activated you will not be asked for this information again. You can leave absentee bids online, and add, edit or amend bids accordingly as well as other useful functions including paying your invoice.

FINE PERIOD INTERIORS

AUCTION

Sunday 21st February 2016 at 12 noon

VENUE

Adam's Salerooms, 26 St Stephen's Green, Dublin D02 X665

SALE CODE

This sale may be referred to as 8142 in all correspondence

VIEWING

Thursday	18 th February	9:30am - 5:00pm
Friday	19 th February	9:30am - 5:00pm
Saturday	20 th February	11:00am - 5:00pm

COLLECTIONS

All lots must be paid for and collected before 5:00pm on Tuesday 23rd February 2016 at the purchaser's risk and expense.

ENQUIRIES

Telephone: +353-1-6760261
Email: info@adams.ie
Web: www.adams.ie



Bid online at our auctions through
the-saleroom.com

IMPORTANT INFORMATION FOR PURCHASERS

1. Estimates and Reserves

These are shown below each lot in this sale. All amounts shown are in Euro. The figures shown are provided merely as a guide to prospective purchasers. They are approximate prices which are expected, are not definitive and are subject to revision. Reserves, if any, will not be any higher than the lower estimate.

2. Paddle Bidding

All intending purchasers must register for a paddle number before the auction. Please allow time for registration. Potential purchasers are recommended to register on viewing days.

3. Payment, Delivery and Purchaser's Premium

Monday, 22nd February 2016, 10.00am - 1.00pm and 2.00pm - 5.00pm. Under no circumstances will delivery of purchases be given whilst the auction is in progress. All purchases must be paid for and removed from the premises not later than 5pm on Tuesday, 23rd February 2016. Auctioneers commission on purchases is charged at the rate of 20% (exclusive of VAT). Terms: Strictly cash, bankers draft or cheque vouched to the satisfaction of the auctioneers, prior to sale. Purchasers wishing to pay by credit card (Visa & Mastercard) may do so, however, it should be noted that such payments will be subject to an administrative fee of 1.85% on the invoice total. American Express is subject to a charge of 3.65% on the invoice total. Please contact our accounts department prior to sale with your payment queries.

4. VAT Regulations

All lots are sold within the auctioneers VAT margin scheme. Revenue Regulations require that the buyer's premium must be invoiced at a rate which is inclusive of VAT. This is not recoverable by any VAT registered buyer.

5.

Please note that any imperfections are not stated.

6. Absentee Bids

We are happy to execute absentee or written bids for bidders who are unable to attend and can arrange for bidding to be conducted by telephone. However, these services are subject to special conditions (see conditions of sale in this catalogue). All arrangements for absentee and telephone bidding must be made before 5pm on the day prior to sale.

7.

All lots are being sold under the Conditions of Sale as printed in this catalogue and on display in the salerooms.



- 1 A SET OF EIGHT MODERN IRISH SILVER CIRCULAR NAPKIN RINGS, Dublin 1971, mark of Royal Irish Ltd., engraved with a dairy maid scene within dentil borders (c. 9.5oz). 5cm diameter

€ 200 - 300



- 3 TWO SIMILAR IRISH SILVER SMALL DISH RINGS, Dublin 1906 & 1919, mark of Edmond Johnson, with pierced, chased and engraved repoussé foliate and scroll decoration (c.8oz). 12cm and 12.5cm diameter; together with a compressed circular dish ring, Dublin 1923 (c.2.5oz). 10.5cm diameter x 3.5cm high, all complete with blue glass liners (3)

€ 400 - 500



- 2 TWO PAIRS OF EDWARDIAN IRISH SILVER SALTS, in the form of circular dish rings, Dublin 1902 & 1903, mark of Edmond Johnson, with pierced, chased and engraved repoussé foliate and animal decoration, complete with blue glass liners (c. 6ozs). 6.3cm and 6cm diameter (4)

€ 250 - 350



- 4 A MODERN IRISH SILVER SIX PIECE CONDIMENT SET, Dublin 1973, Royal Irish Ltd., of circular baluster form, half of the set engraved with a Celtic style motif; complete with four matching spoons and four blue glass liners (c.11oz).

€ 100 - 150



5 A MODERN IRISH SILVER SUGAR CASTER, Dublin 1973, mark of Royal Irish Ltd., of circular baluster form with heavily engraved Celtic knot decoration (c.8oz). 16.2cm high

€ 100 - 150

6 A PAIR OF MODERN SILVER CIRCULAR DECANTER COASTERS, London marks, with turned timber bases and reeded rims. 14cm diameter (2)

€ 300 - 400



7 A MODERN IRISH SILVER CARD TRAY, Dublin 1973, mark of J.M. & Co., of shaped circular form with raised pie crust rim (c. 5oz). 15.5cm diameter

€ 120 - 180



- 8 AN EARLY 20TH CENTURY IRISH SILVER CIRCULAR DISH RING,
Dublin 1913, maker's mark of Sharman D. Neill of Belfast, with pierced, chased and engraved repoussé decoration of birds, vines and fruit, complete with blue glass liner (c.10oz). 30cm diameter

€ 800 - 1,200



- 9 A VICTORIAN SILVER TEA CADDY,
London 1863, mark of Alexander Smith, of oval panelled form, the flat hinged lid with bell finial, crested (c.15oz). 13.5 x 9.5 x 12.5cm high

€ 600 - 1,000



10 A GEORGE IV IRISH SILVER FISH SERVER, Dublin 1826, mark of Samuel Neville, with plain fiddle pattern handle, the pierced blade engraved with fish and aquatic foliage (c.5.5oz). 30cm long

€ 140 - 180



12 A SET OF SEVEN SCOTTISH SILVER FINGER BOWLS, Edinburgh 1933, mark of Brook & Son, of plain circular form with outturned rims (c.22oz). 10.2cm diameter (7)

€ 250 - 350



11 A PAIR OF MODERN IRISH SILVER BEAKERS, Dublin 1973, mark of G.B., of plain circular slightly bulbous form with gilt interiors and reeded rim (c.11oz). 7.5cm diameter x 10cm high (2)

€ 200 - 300



13 AN EDWARDIAN SCOTTISH SILVER TAZZA, Edinburgh 1908, mark of Brook & Son, of circular form with twin handles, the shallow bowl with moulded rim raised on circular centre pillar and spreading foot (c.27oz). 33cm wide over handles, 17cm high overall

€ 300 - 500



14 A MODERN IRISH SILVER FOUR PIECE TEA AND COFFEE SERVICE, Dublin 1973, mark of Royal Irish Ltd., of circular baluster form with engraved foliage and scrollwork, each raised on a circular pedestal foot (c.78oz). (4)

€ 800 - 1,200



15 AN EARLY 20TH CENTURY SILVER CIGARETTE BOX, Dublin 1913, mark of Wakeley & Wheeler, of large proportions, the hinged lid with arabesque strapwork within dentil borders, enclosing a mahogany lined interior and raised on lobed bun feet. 25 x 14 x 8.5cm high

€ 600 - 1,000



16

A GEORGE V SILVER THREE PIECE TEA SERVICE,
Birmingham 1922/23, mark of J.G. Ltd., of shaped rectangular panelled form, raised on compressed ball supports (c.33oz).

€ 300 - 500

17

A MISCELLANEOUS LOT OF SILVER COMPRISING:

- A modern Irish spirit measure, Dublin 1979
- A plain christening mug, Birmingham 1936
- A plain sugar nips, Exeter 1825
- A modern Irish paper knife, Dublin 1978
- An engine turned napkin ring, Birmingham
- A pair of George III salt spoons, London 1791 (c.8oz all in); together with a pair of plated apostle caster spoons (11)

€ 300 - 400



18

A SET OF FIVE IRISH SILVER AND ENAMEL DECANTER LABELS,
Dublin 1973, each with an engraved reserve within a border of trailing shamrocks on a blue ground, on hanging chains. Labels read Scotch, Brandy, Sherry, Rum and Vodka respectively. 4.2 x 3.5cm

€ 200 - 400

A SET OF FOUR LATE VICTORIAN SILVER TALL TABLE
CANDLESTICKS,

London 1897, mark of Langley, Archer and West, the columns draped with oak leaf and acorn swags under corinthian capitals and raised on square spreading weighted bases decorated in the neo-classical taste. Retailer by West & Sons of Dublin. 32cm high (4)

€ 3,000 - 5,000





20

AN AMERICAN SILVER TRAVELLING FOLDING THREE PART PHOTOGRAPH FRAME BY TIFFANY, hinged and opening to reveal three oval panels, stamped 'Sterling, Tiffany & Co.'. 8.6 x 6.5cm (closed)

€ 200 - 300

21

A DANISH SILVER CAKE SLICE, by Georg Jensen, of plain form, stamped 'Sterling Denmark'

€ 150 - 250



22

AN ART DECO SILVER JUG, London 1925, of plain ovoid form with single c-scroll handle; together with a sugar bowl, Birmingham 1926, and a Georgian revival silver sauceboat, Birmingham 1903, 14oz in total (3)

€ 200 - 300

23

A PAIR OF GEORGE III SILVER GOBLETS,
by Thomas Robbins, London 1805, of tapering cylindrical
form, each with reverse fluted panels raised on a circular
spreading foot with lip. 16cm tall

€ 600 - 1,000



24

AN EARLY GEORGE III IRISH SILVER QUAICH AND
COVER,

Dublin c.1760, maker's mark of John Graham, with milled rims and
shaped and ribbed flanges, the domed cover with acorn finial, en-
graved with a crest and coronet, 24cm wide over flanges. The crest is
that of Thomas Knox, Earl of Ranfurly, Dungannon House, Co. Tyrone.
This type of bowl is more commonly found in Scottish silver.

€ 1,500 - 2,000



25

A LATE 18TH CENTURY IRISH GEORGE III SILVER SAUCEBOAT,

Dublin, no date mark, mark of Matthew West, the helmet form body with repoussé chased and engraved decoration depicting a milkmaid scene, with punched rim, applied s-scroll handle, raised on shell capped and pad feet, 9.8cm high, 17.2cm wide;

together with a mid 18th century Georgian silver sauce boat, Dublin, no date mark, the plain body inscribed with bright cut initials 'MB' to one side, applied s-scroll handle, raised on later lion capped ribbon wrapped legs terminating in paw feet, 8.2cm high, 14cm wide. (c. 10ozs in all). (2)

€ 300 - 500

26

AN IRISH SILVER SUGAR BOWL,

by West and Son. Dublin, in mid-18th century style, with punched wavy rim and body with spiral flutes, leaves and shell capped scroll legs. 13cm diameter

€ 300 - 500



27

A CASED SET OF EDWARDIAN SILVER BON-BON DISHES,

Birmingham, each of shaped circular form, decorated with pierced wavy body on spreading circular foot. 15cm diameter

€ 200 - 300





- 28 A LARGE SUITE OF SILVER KING'S PATTERN CUTLERY, Sheffield 1942/43, comprising:
- 12 large dinner knives (c. 34ozs)
 - 12 silver handle table knives
 - 12 soup spoons (c. 24ozs)
 - 12 desert forks (c. 22ozs)
 - 12 large dessert spoons (c. 24ozs)
 - 4 table spoons (c. 16ozs) and two further matched examples;
 - 12 teaspoons (c. 12ozs)
 - 12 coffee spoons (c. 4ozs)
 - 12 large silver handle knives

€ 2,500 - 3,500



- 29 A GEORGE III IRISH SILVER SAUCE BOAT, Dublin 1770, makers mark of Charles Townsend, of large proportioned helmet form, the body profusely embossed and chased with foliate and fluted decoration, with acanthus wrapped c-scroll handle, raised on shell capped hoof feet (c.10.5ozs). 21.3cm long, 12.2cm wide

€ 1,500 - 2,500



30 A GERMAN SILVER BEAKER, 800 standard, of circular tapering form, decorated with a frog on a lily pad standing beneath a spider web

€ 100 - 200



32 A SILVER MOUNTED GLASS CIGAR CASE, Birmingham 1903, makers mark of Griffiths & Singleton, of rectangular form, with hinged lid, raised on ball feet. 16cm long, 8.5cm wide, 4.5cm high; together with cigar cutter. (2)

€ 100 - 200



31 A SILVER NEO-GRECIAN HOT WATER POT, London, of baluster form decorated with a band of anthemions and swags to the neck, the plain body applied with ebon handle (c.26oz). 27cm high

€ 400 - 600



33 A FRENCH SILVER DIVIDING SPOON, 19TH CENTURY, fiddle and thread pattern, engraved with crest to reverse of handle. 32cm long; together with a French bright cut engraved straining ladle, Paris 19th century, point handle engraved with vacant cartouche above leafy trails. (2)

€ 150 - 250



34 AN IRISH PROVINCIAL SILVER SAUCE BOAT,
makers mark of George Hodder of Cork (fl. 1738 - 71), struck 'STERLING', of helmet form,
the plain body with wavy rim and s-scroll handle, raised on shell cast scroll feet headed by
female masks (c. 5.5ozs). 16cm long, 7.8cm high

€ 1,500 - 2,000



35 AN IRISH GEORGIAN SILVER PEAR SHAPED COFFEE POT,

Dublin c.1780 (no date mark), mark of Alex Barry, the domed hinged lid with acorn finial, applied with plain 's' scroll handle and chased beaded and acanthus wrapped spout, the body with engraved foliate decoration, leafy swags and bearing crests to either side, one enclosing initials "RE", raised on stepped engraved circular foot. (c.28 ozs) 30cm high

€ 600 - 1,000



36 AN IRISH SILVER THREE-PIECE TEA SERVICE,

Dublin 1908, makers mark of Edmond Johnson, comprising a teapot, two-handed sugar bowl and cream jug, each decorated to the body and foot with bands of embossed Celtic interlacing scrollwork, the teapot with hinged lid and ebon handle, each piece raised on pedestal foot (c. 38ozs all in including handle). (3)

€ 600 - 800



37 A CASED SET OF SILVER CONDIMENTS, Birmingham, comprising - an open salt cellar - a pepper pot - and a mustard pot, each in Georgian style; together with a cased pair of Celtic Revival silver napkin rings, Birmingham.

€ 150 - 250



39 A VICTORIAN CRANBERRY GLASS AND SILVER GILT DOUBLE-ENDED SCENT BOTTLE, c.1870, contained within fitted case, together with an Edwardian silver card case, Birmingham, with fitted interior (2)

€ 200 - 300



38 A CASED SET OF SILVER TEASPOONS AND TONGS, Birmingham 1923 each of 'bead and reel' design, together with a cased set of bone handled fish servers

€ 80 - 120



40 A PAIR OF AMERICAN SILVER CANDLESTICKS, stamped 'Theodore B. Starr New York', each fitted with beaded sconces above engraved columns, over a circular foot and square plinth base (2)

€ 300 - 500



41 A LARGE EDWARDIAN SILVER DRESSING TABLE MIRROR,
London 1903, mark of William Comyns & Sons Ltd., of shaped waisted form, decorated in the Rococo style with chased rockwork and opposing 'c' scrolls, headed by a vacant cartouche and set to each corner with reserves of infant cherub heads, with bevelled glass. 47 x 57.5cm

€ 500 - 700



43 A JAEGER LE COULTRE DIAMOND MOUNTED LADIES WRISTWATCH, c.1920's. the platinum case of angled rectangular shape with Arabic numerals to the dial and fitted with black and gilt metal strap.

€ 800 - 1,200



42 A CONTINENTAL 18 CARAT GOLD HALF HUNTER POCKET WATCH,
with engraved and enamel cover, enclosing a white enamel dial, surmounted by suspension loop

€ 500 - 800



44 A COLLECTION OF SILVER PLATED ITEMS,
including a 19th century tea-service and tray, a cased set of Victorian bone handle fish servers, a cased set of nut crackers, a sugar scuttle, a hip flask and serving spoons

€ 60 - 100



45 AN 18TH CENTURY OLD SHEFFIELD PLATE DISH RING, spool shaped, pierced, engraved and chased with rural domestic scenes, with vacant cartouche to each side. 20cm diameter

€ 150 - 250

46 A SILVER RECTANGULAR CIGARETTE BOX, Dublin 1918, mark of Reid & Sons, Newcastle-on-Tyne, the hinged lid with strapwork decoration and raised on leaf cast bracket and pomegranate feet. 19.5 x 9.5 x 7.5 high

€ 100 - 200



47 A WALTHAM OPENFACE POCKETWATCH, the reverse embossed with Russian locomotive, on silver suspension chain

€ 100 - 200



50 AN EDWARDIAN WALNUT MARQUETRY TABLE-TOP CHESS BOARD, the chequered top flanked by twin storage compartments, and containing a set of turned wood chess pieces, raised above four long drawers opening on both sides, having trade label of 'C. Ash & Sons, Broad Street, London, England' on a moulded baize covered base. 39cm x 45cm x 12cm high

€ 250 - 300



52 A VICTORIAN BRASS BOUND MAHOGANY RECTANGULAR LAP-DESK, the lid opening to reveal a tooled leather writing slope and pen compartments, also fitted with an internally locked side drawer with inset brass handles. 40cm x 25cm x 18cm high

€ 150 - 200



51 AN EARLY VICTORIAN MAHOGANY RECTANGULAR LAP-DESK, the interior well fitted and having brass mounts, the base with single side drawer with inset brass handle, lockable from the inside. 38cm x 23cm x 15cm high

€ 100 - 200



53 A VICTORIAN BRASS BOUND INLAID WALNUT RECTANGULAR LAP-DESK, the lid opening to reveal a tooled leather writing slope and fitted pen and other compartments, the case lid and front decorated with boxwood and rosewood stringing and banding. 40.5cm x 24cm x 17cm high

€ 120 - 180



- 54 A LARGE MID VICTORIAN BRASS BOUND YEW WOOD CAMPAIGN TRAVELLING SECRETAIRE BOX, the lid opening to reveal an interior fitted with stationery pockets, pen and ink compartments, a fold-out writing surface and an internally locked side drawer with inset brass handles. 48.2cm x 28cm x 20.8cm high

€ 300 - 400



- 55 A LATE GEORGIAN UPRIGHT MAHOGANY CAMPAIGN DECANTER BOX, with brass mounts and two fitted inset brass ring handles, the interior fitted with two cut glass decanters in baize lined snug compartments flanking a central compartment for drinking glasses, partially complete, stamped on the rim 'J Parkinson'. 40cm x 16cm x 28cm high

€ 250 - 350



56

A 19TH CENTURY FRUITWOOD BIBLE BOX shaped in the form of a large book, the spine sliding open to reveal a plush lined interior, containing a copy of Bagster's Comprehensive Bible, the inside front cover with a presentation inscription to 'Mr. Stephen Jones, Parish Clerk and School Master, Yatton (Yatton is a village in Somerset, England) 28 September 1847.' 34cm x 38cm x 14cm deep

€ 200 - 300

57

A 19TH CENTURY MAHOGANY CIRCULAR REVOLVING 'LAZY-SUSAN', with everted rim and raised on heavy turned pedestal foot. 54cm diameter, 17cm high

€ 100 - 200



58

A VICTORIAN TREEN COVERED URN, with plain acorn finial above a bulbous body on pedestal foot, 25cm high; together with a circular treen box, the lid with inset brass plaque. 12cm diameter, 8.3cm high (2)

€ 100 - 200





59

A REGENCY INLAID MAHOGANY OCTAGONAL TEA CADDY, the hinged lid decorated inside and out with an oval holly and satinwood stylised shell within crossbanding and stringing, the interior with two sliding top compartments. 25.5cm x 14.4cm x 15cm high

€ 100 - 150

60

A LATE GEORGE III INLAID SATINWOOD RECTANGULAR BOX with crossbanded decoration and stringing, the interior with two adjustable partitions. 30.4cm x 15cm x 15cm high

€ 100 - 200



61

A REGENCY ROSEWOOD SARCOPHAGUS TEA CADDY, the flat domed hinged lid enclosing a zinc lined interior, the tapering case fitted twin brass ringed handles, raised on lobed feet. 33cm x 17cm x 18cm high

€ 100 - 200





62 A LATE 18TH CENTURY MAHOGANY WIG-STAND, the circular dished top on telescopic extending column, raised on a baluster turned and spreading weighted platform base. Base 15cm diameter; height extending to 33cm

€ 120 - 160



64 A GEORGIAN MAHOGANY RECTANGULAR CUTLERY TRAY with twin compartments and having central brass carrying handle, 37 x 23.5cm; together with a 19th Century mahogany wine bottle stand. 32cm long (2) (Bottle not included)

€ 80 - 100



63 TWO GEORGIAN STAINED WOOD RECTANGULAR CUTLERY TRAYS, each with two compartments and having raised central carrying handle. 36cm x 21cm, and 38cm x 25cm (2)

€ 80 - 100



65 A REGENCY MAHOGANY BOAT SHAPED CHEESE COASTER, raised on square platform base, lacking casters. 41 x 25cm

€ 100 - 200



- 66 A SMALL LATE 18TH CENTURY INLAID MAHOGANY BOX, the hinged lid with centre oval holly and satinwood shell motif within a diamond pattern band. 21.4cm x 12cm x 12.5cm high

€ 60 - 100

- 67 AN EARLY 19TH CENTURY INLAID MAHOGANY RECTANGULAR TEA CADDY, the crossbanded top enclosing a partially fitted interior, raised on brass ball feet. 30.2cm x 15.5cm x 16cm high

€ 60 - 100



- 68 A VINTAGE BROWN LEATHER, ALLIGATOR PATTERN, OVERNIGHT CASE with silk lined interior, fitted with a part toilet set, having a canvas protective outer cover and having original key. 43cm x 33cm x 17.5cm high

€ 200 - 300





69

A 19TH CENTURY MAHOGANY COOPERED
BEDROOM FUEL BUCKET
of compact proportions with slender brass swing
handle and brass banding, fitted brass liner. 35cm high,
31.5cm diameter

€ 300 - 500

70

A 19TH CENTURY MAHOGANY RECTANGULAR
CAMPAIGN OR TRAVELLING BIDET,
the hinged lid opening to reveal a zinc liner with ring handles, the
base unfolding to provide a stand, fitted at each end with inset brass
handles, 44cm x 26cm x 13cm high when closed;
together with a 19th Century mahogany cased campaign
mirror, with folding lid. 45cm x 36cm x 5cm deep. (2)

€ 200 - 400



71

A GEORGE III MAHOGANY SLOPE FRONT KNIFE BOX
CONVERTED TO A STATIONERY BOX,
the hinged cover enclosing a compartmented interior. 36cm high

€ 250 - 350



72 A PAIR OF VICTORIAN GILTWOOD AND GESSO WALL SCONCES, carved with ribbon head surmount above a portrait medallion and drapery folds, each with three naturalistic scroll arm branches fitted with raised candle sockets. 83cm high

€ 1,000 - 1,500



73 A REGENCY MAHOGANY CROSSBANDED SHALLOW BREAK-FRONT SIDE CABINET, fitted four doors filled with damask backed brass trellis grills on plinth base. 206cm wide x 36cm deep x 90cm high

Provenance: Baronscourt, Co. Tyrone

€ 1,500 - 2,500



74

A FRENCH CAST BRASS FIVE LIGHT CHANDELIER, 19TH CENTURY, decorated with lion mask and foliate motifs (externally electrified), 59cm high

€ 300 - 400

75

A GEORGE II STYLE MAHOGANY ARMCHAIR IN THE MANNER OF BUTLER, with outcurved arms, over two baluster shaped splats, divided by three turned column supports, with embroidered seat, raised on a central acanthas capped cabriole leg and three turned legs

€ 300 - 500



76

A GEORGE IV MAHOGANY BERGÈRE ARMCHAIR, with cane back and sides, raised on square tapering legs and brass castors.

€ 200 - 400





77 STYLE OF JAMES ARTHUR O'CONNOR (1792-1841)
Figures in a Lake and Mountain Landscape
Oil on canvas

€ 1,000 - 2,000



78 A GEORGE III MAHOGANY SERPENTINE FRONT SECRETAIRE CHEST,
with four long cockbeaded drawers, the top drawer with fitted compartments and writing
slide, with brass oval drop handles. 91cm wide x 57cm deep

€ 2,000 - 4,000



79

A SMALL BRASS SHAPED CIRCULAR LANTERN

with five curved clear glass panels and raised on ball feet. 33cm high, 16cm diameter

€ 100 - 150



81

A VICTORIAN IRISH BRASS CARRIAGE CLOCK, of oval form by Waterhouse & Co., Dublin, in a travelling case

€ 800 - 1,200

82

A FRENCH ORMOLU AND POLISHED STEEL MANTLE CLOCK, 19th century, representative of the Arts, the globular dial with applied Roman numerals and surmounted by a winged cupid and doves above a reclined figure holding painting and trophies, over a shaped base with leaf cast scroll feet, movement stamped Derriere a Paris 2890, Medaille D'or 1827. 33cm high

€ 500 - 700



A FRENCH MARBLE AND ORMOLU MOUNTED 'BALLOON' MANTLE CLOCK,
19th century, modelled as a hydrogen air balloon and carriage, supported by leaf wrapped pillars, fitted
with circular white enamel dial signed 'Dutertre A Paris' surrounded by Roman
numerals, with starburst pendulum and pendant carriage
holding a musical cherub, on shaped platform base

€ 2,000 - 3,000





84 A COLLECTION OF FIVE JAPANESE WOODBLOCK PRINTS, 19th century, various artists, including Kaniyoshi. Each approx. 34 x 24cm (5)

€ 500 - 800



86 MIZUNO TOSHIKATA (JAPAN 1866-1908) Yoshitsune at Kuramayama Mountain by Moonlight Woodblock print, triptych, 35 x 71cm

€ 200 - 400



85 CHINESE SCHOOL Courtesans in a Garden Landscape Gouche on silk fan shaped panel, 45 x 75cm

€ 300 - 500



87 CHINESE SCHOOL (19TH CENTURY) A set of nine gouache paintings depicting various landscapes and trade scenes On pith paper, each 13 x 22cm

€ 400 - 600



88 A CHINESE TURQUOISE GROUND GINGER JAR,
of ovoid form, brightly enamelled with shou medallions
surrounded by flowers and scrolling foliage, 21cm high

€ 300 - 400



90 A CHINESE BLANC DE CHINE MODEL OF
RECUMBANT GUANYIN,
resting on a bed of lotus pods. 29cm wide

€ 300 - 400



89 A THUN PORCELAIN BLANC DE CHINE ART
DECO FIGURE OF A NUDE WOMAN WITH A
HAND MIRROR,
stamped, 41cm high.

€ 300 - 400



91 A CHINESE SAUCAI GLAZED POTTERY
MODEL OF A HORSE,
in the traditional Tang style, glazed in green, yellow and
brown tones, standing on a rectangular plinth base.
44cm high

€ 500 - 700



92

A PAIR OF EDWARDIAN RED LEATHER WING BACK ARMCHAIRS
each with stuffed rectangular back, loose cushion seat and outturned arms with brass studded upholstery on turned bun feet and castors

€ 600 - 1,000

93

A PAIR OF GEORGE III STYLE WING BACK ARMCHAIRS,
raised on square tapering legs. (2)

€ 800 - 1000



94

A PAIR OF IRISH GEORGE III MAHOGANY ELBOW CHAIRS,
each with carved crest rail, pierced splats and drop in upholstered seats raised on square tapering legs.

€ 700 - 900



95 A FRENCH LATE 19TH CENTURY GARNITURE DE CHEMINÉE, the gilt bordered enamel dial set into a bronze pedestal flanked by a bronze figure of a female musician raised on a red veined marble platform base on cast bronze feet. 44 x 17 x 37cm high; together with a pair of bronze urn side ornaments on conforming bases. 30cm high (3)

€ 600 - 800



96 AN IRISH GEORGIAN MAHOGANY SIDE TABLE, the tray top with moulded rim interspersed with flower heads to either side and plain frieze, the apron centred by a shell and trailing acanthus leaves, raised on shell capped cabriole legs terminating in claw feet with leaf carving to the inside of each foot. 94cm wide x 56cm deep

€ 2,000 - 3,000



97

A PAIR OF GEORGIAN STYLE IRISH MAHOGANY SIDE CHAIRS, each upholstered in striped damask and raised on shell carved cabriole legs terminating in claw and ball feet

€ 500 - 800

98

AN IRISH GEORGE III MAHOGANY SILVER TABLE, of rectangular form, the moulded tray top above a shell carved frieze and acanthus capped cabriole legs, terminating in facet pad feet. 80 x 50cm

€ 1,500 - 2,500



99

A BRASS HEXAGONAL HALL LANTERN, 19TH CENTURY, with bevelled glass plates, suspended from a corona. 68cm

Provenance: St. Anne's, Clontarf

€ 500 - 1,000



100 A GEORGIAN MAHOGANY CHEST ON CHEST,
with moulded cornice above two short and six long drawers in two stages,
the cornice with Gothic blind fretwork and brass drop handles, raised on
bracket feet. 42cm wide x 183cm tall

€ 2,000 - 3,000



101 A GEORGIAN MAHOGANY FRAMED UPHOLSTERED OPEN ARMCHAIR, the square back seat and arm rest covered in silk damask and raised on chamfered supports.

€ 300 - 400

103 A 19TH CENTURY ELM WINDSOR CHAIR, the arch top with wheel and bar splat, on shaped solid panel seat raised on turned legs and stretcher

€ 300 - 400

102 AN IRISH MAHOGANY AND UPHOLSTERED SIDE CHAIR, stamped 'Strahan of Dublin', the arched padded back and upholstered seat, on turned baluster legs.

€ 100 - 200



103

104

ARTHUR HACKER (1858-1919)

Portrait of a Lady

Oil on canvas, 77 x 64cm

Signed and dated 1916

€ 3,000 - 4,000



105

A 19TH CENTURY CONTINENTAL FRUITWOOD BOMBÉ COMODE,
the red veined marble top raised above three long drawers with cast brass handles
above a shaped carved apron on short carved cabriole legs

€ 2,000 - 4,000



106 A PAIR OF VICTORIAN STYLE MAHOGANY WIG-STANDS, the turned columns on dished circular base. 39cm high

€ 100 - 200



108 AN OAK CASED COMPACT GRANDMOTHER CLOCK, early 20th century, the squared hood enclosing an engraved brass dial with Roman numeral chapter ring above a paneled trunk door with rope twist columns to each side, on plinth base, with pendulum. 176cm high

€ 400 - 600



107 A PAIR OF MAHOGANY BEDSIDE NIGHT STANDS, BASICALLY 19TH CENTURY, each with square moulded top with raised three-quarter gallery above single cupboard door, on ring turned tapering legs. 82cm high

€ 400 - 600



109 A 19TH CENTURY SCOTTISH WINGBACK ARMCHAIR, by Morrison & Co. Edinburgh, the padded back and seat upholstered in tapestry fabric with brass studding on leaf carved cabriole legs and pad feet, stamped with maker's mark and serial number.

€ 500 - 800



110 A GEORGIAN STYLE MAHOGANY FRAMED WING BACK ARMCHAIR, in checkered upholstery, raised on shell capped cabriole legs terminating in pad feet. 110 x 70cm

€ 150 - 250



109A A VICTORIAN MAHOGANY DOUBLE DROP LEAF SUTHERLAND TABLE, extending to rectangular form, with canted corners on gate leg and trestle end supports. 76cm wide, 92cm long

€ 100 - 200



111 AN ITALIAN WALNUT AND MARQUETRY INLAID CASSONE, 17TH CENTURY, of rectangular form, the hinged top inlaid with allegorical scene surrounded by scrolling arabesques, repeated to the body and centred with a carved armorial on heavy carved paw feet. 172cm wide

€ 2,000 - 3,000



112 A 19TH CENTURY CIRCULAR CAST BRASS CEILING LIGHT,
fitted with four electrical lamps and eight light sconces, the
body decorated with foliate and ribbon tied motifs. 1115 x
56cm

€ 700 - 1,000

113 A GEORGE III MAHOGANY TOILET MIRROR,
of oval form, raised on scrolling supports, the cross-
banded base with two short drawers and one long
drawer, on bracket feet. 64cm high x 44cm wide

€ 150 - 250



114 A VICTORIAN ROSEWOOD ROLL-TOP
WRITING CABINET
with raised back above a cylinder desk with fitted inter-
ior above twin fielded panel doors with carved corbels
and raised on platform base. 100cm wide, 153cm high

€ 400 - 600





115 A VICTORIAN GILT AND GESSO RECTANGULAR OVERMANTLE MIRROR, the domed top with figural and floral wrapped cresting, flanked by acanthus capped pillasters. 146 x 150cm

€ 800 - 1,200



116 AN IRISH REGENCY MAHOGANY SERVING TABLE, of rectangular form, the panelled gallery back with scrolling brass supports, above a plain top with reeded rim over ribbed apron, and raised on fluted legs terminating in lion paw feet. 120 x 201cm

€ 1,000 - 1,500



117 A VICTORIAN MAHOGANY X-FRAMED MUSIC CANTERBURY, with three long divisions above a single frieze drawer and turned tapering supports. 51cm wide

€ 120 - 180



119 A VICTORIAN BURR WALNUT MUSIC CANTERBURY, of upright rectangular form, the platform top with pierced fretwork gallery on spiral turned supports above three divisions and single drawer frieze, turned feet and porcelain castors. 102cm high, 70cm wide

€ 400 - 600



118 TWO VICTORIAN MAHOGANY FRAMED UPHOLSTERED ARMCHAIRS, each with arched padded back covered in crimson damask, on turned legs and castor terminals; together with a lady's chair. (3)

€ 400 - 600



120 A VICTORIAN MAHOGANY DROP LEAF SUTHERLAND TABLE, mid 19th century, extending to oval form, on gate leg action supports, terminating with splayed legs. 103cm wide

€ 100 - 200



121 A 19TH CENTURY IRON FRAMED BRASS FIRE GRATE,
of compact form, with column supports and pierced apron. 47 x 64cm

€ 1,000 - 2,000



122

A REGENCY MAHOGANY CIRCULAR TWO TIER DUMB WAITER, with reeded moulding above three rope twist column supports, raised on a fluted pedestal terminating in quatrefoil base on bun feet with castors. 113cm high x 60cm wide

€ 500 - 700

123

A 19TH CENTURY WALL MIRROR, fitted with rectangular plate below a pierced crest, centred with ho ho bird and incised gilt scroll work over pierced wavy apron. 102cm high

€ 200 - 300



124

A GEORGE III MAHOGANY RECTANGULAR NIGHTSTAND with tray top above reeded panel door on a pull-out drawer base. 61.5cm wide, 45cm deep, 77cm high

€ 300 - 400



125 JAMES JOHN HILL (1811-1882)
Children picking blossoms from a tree (Tondo)
Oil on canvas, 63.5 x 63.5cm

€ 500 - 700



126 AN IRISH MAHOGANY TRIPLE CHAIR BACK SETTEE,
19th century, probably by Butler of Dublin, the raised back with leaf carved top rail above
three vase shaped splats, carved with rosettes and pendant bellflowers, over single drop-in
seat, acanthus capped cabriole legs and scroll feet. 203cm wide

€ 1,000 - 1,500



127 A GROUP OF SEVEN CHINESE BLUE AND WHITE PORCELAIN DISHES, 18TH CENTURY, each painted with floral and garden designs within blue line borders. (7)

€ 300 - 500



129 A PAIR OF CHINESE CARVED CEREMONIAL PADDLES

€ 150 - 200



128 A LARGE DOULTON AND SLATORS POLYCHROME GLAZED EARTHENWARE VASE C.1900, with moulded wavy rim decorated in green and beige tones with scattered flowers over a band of stiff leaves, impressed factory mark, 71 cm high

€ 600 - 1,000



131 A CHINESE BRONZE MODEL OF A STRIDING HORSE, modelled in the Tang style and balanced on one foot. 41cm long

€ 300 - 500



133 A CHINESE POTTERY MODEL OF A STANDING FIGURE, in Han style, modelled with outstretched hands. 50cm high

€ 400 - 600



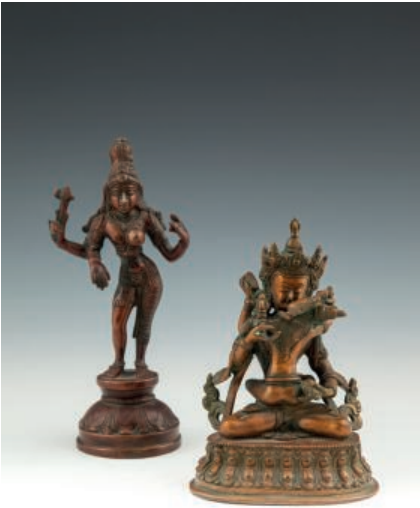
132 A CHINESE BLANC DE CHINE GUANYIN, Goddess of Mercy, with five point tiara. 40cm high

€ 200 - 400



134 A LARGE JAPANESE BLUE AND WHITE BOTTLE VASE, c.1900, the tapering neck painted with a dense foliate ground and body with birds, plum trees and stylised flowers. 92cm high

€ 600 - 800



135 A TIBETAN BRONZE TANTRIC GROUP, modelled as embracing figures, seated on inverted lotus base, bronze. 38cm high; together with another of a standing deity. 21cm high; and a Tibetan bronze group of a dancing female balanced on the back of an attendant. 34cm high (3)

€ 200 - 400

136 A CHINESE MING PORCELAIN BLUE AND WHITE CARGO BOWL, Wan Li, 16th Century, painted with flowering plants between concentric lines, stylised mark to base. 12.5cm diameter

€ 200 - 300



137 A CHINESE 18TH CENTURY EXPORT PORCELAIN SPOON TRAY, Qianlong, painted and enamelled with crest above initials. 12cm wide; together with an amorial dish by Sampson of Paris, 24 cm diameter, and a Chinese chrysanthemum bowl, with green enamels and gilt rim, seal stamp to base (3)

€ 100 - 200

137A A CHINESE POTTERY HAN DYNASTY
BURIAL FIGURE,

modelled as a standing warrior, decorated in
cream and buff tones. 46cm high

Provenance: Lam's Gallery, Hong Kong

€ 1,500 - 2,000





138 ATTRIBUTED TO WILLIAM SHAYER (1787-1879)
Fisherfolk sorting a catch on a rocky shore
Oil on canvas, 61 x 51cm

€ 600 - 800

139 JOSEPH HARLOR (1809-1887)
Boy fishing on a rocky coast, boats offshore
Oil on canvas, 30 x 51cm
Signed

€ 500 - 700



140 DANIEL SHERRIN (1868-1940)
Extensive seascape, with rollers breaking
Oil on canvas, 51 x 101.5cm
Signed

€ 700 - 1,000



141 WILLIAM BEATON BARR (1867-1933)
The Bachelor
Oil on canvas, 61 x 46cm
Signed and dated (18)97
Exhibition: Royal Glasgow Institute 1897 No. 557

€ 2,000 - 3,000



142 A.J. COLLINGS (19TH CENTURY)
Harvesting in an extensive landscape
Oil on canvas, 30 x 51 cm
Signed

€ 400 - 600



144 19TH CENTURY SCHOOL
Boy and girl in a rowingboat off a rocky coast
Oil on canvas, 61 x 51 cm
Indistinctly signed

€ 300 - 500



143 JOHN TURNER (20TH CENTURY)
Figures and Boats in a River Landscape with
Cattle, Evening
Oil on panel, 51 x 61 cm
Signed

€ 500 - 700



145 H. TOMS (BRITISH C.1870)
County cottage scenes
A pair, Oil on board, Tondo 16.5 cm diameter
Both signed

€ 200 - 400



146 ATTRIBUTED TO SIR HENRY RAEBURN (1756-1823)
Bust length portrait of a young lady
Oil on canvas, 76 x 64cm

€ 1,000 - 2,000



147 A PAIR OF GEORGE III MAHOGANY BOW FRONT FOLDING TOP CARD
TABLES,
with baize lined interior, raised on square tapering legs with satinwood stringing. 92cm
wide

€ 2,000 - 4,000



148 A LARGE VICTORIAN MAHOGANY FRAMED UPHOLSTERED BUTTON BACK COUCH, the arch crest with carved vine and fruit and raised on scroll topped cabriole legs and scroll feet. 200cm long

€ 800 - 1,200

149 A VICTORIAN MAHOGANY FRAMED BALLOON BUTTON BACK GENTLEMAN'S ARMCHAIR, covered in green hide and raised on cabriole legs and scroll feet.

€ 400 - 600



150 A PAIR OF 19TH CENTURY MAHOGANY FRAMED ELBOW CHAIRS IN THE GEORGIAN TASTE, the flat crest rail above a pierced vase splat, padded seats covered in green hide and raised on chamfered square supports.

€ 250 - 400



- 151 A 19TH CENTURY GILTWOOD RECTANGULAR COMPARTMENTED OVERMANTLE MIRROR, the cornice with ball banding above a shell decorated fluted frieze and raised on leaf cast pillars. 133.5cm wide, 82cm high

€ 500 - 800



- 152 A GEORGE IV INLAID MAHOGANY RECTANGULAR BREAKFAST TABLE, on spiral turned centre pillar and quadruped base, with brass castors. 148cm

€ 1,500 - 2,000



153

A GEORGE I STYLE WALNUT FRAME WALL MIRROR,
of upright rectangular form, with carved scroll frames,
surmounted by broken swan neck pediment. 106 x 62cm

€ 200 - 300

154

A SET OF SIX QUEEN ANNE STYLE WALNUT
DINING CHAIRS,
comprising two carvers and four single chairs, with vase
shape splats and drop in seats on cabriole legs. (6)

€ 600 - 1,000



155

A GEORGE III WALNUT BOWFRONT HANGING CORNER
CABINET

€ 800 - 1,000



156

AN IRISH GEORGE III MAHOGANY LONGCASE CLOCK,

by William Ross (fl. 1764-1817), Cork, the swan neck pediment above brass dial with open moon phase and high water indicator above a waisted case and raised on square bracket feet. 231 cm tall

€ 4,000 - 6,000



157

A LATE GEORGE III INLAID MAHOGANY SLOPE FRONT BUREAU,
the crossbanded top above a drop front writing section, well fitted with drawers and pigeon holes, the central cupboard decorated with a dancing minstrel, and raised above two short and three long drawers with brass drop handles on bracket feet. 107cm wide x 56cm deep x 112cm high

€ 600 - 1,000

158

A MAHOGANY SERPENTINE FRONT SIDE TABLE,
in the Georgian taste, the moulded top above a lattice, blind fretwork frieze and raised on chamfered square supports. 93cm wide x 46cm deep x 72cm high

€ 400 - 600



159

A GEORGE III STYLE MAHOGANY SNAP TOP SUPPER TABLE,
with pie crust rim above a bird cage and carved baluster column and raised on carved tripod supports and claw and ball feet. 48cm diameter, 64cm high

€ 250 - 300



160 CHARLES ROBERT PATTERSON (1878-1958)

Glory of the Seas

Oil on canvas, 102 x 142cm

Signed. Title inscribed on stretcher verso.

C.R.Patterson was born into a shipbuilding and seafaring family. His father was president of the Whitehaven Shipbuilding Company of Southampton, his uncle was a ship master and his brother was also a mariner. At thirteen, Patterson was apprenticed and went to sea as ship's boy.

As a deep water sailor, Patterson rounded Cape Horn four times. While sailing before the mast, he discovered his ability to depict his love of ships and the sea through painting, initially on his shipmates' sea chests. He studied art briefly in Chicago and then moved to settle and open a studio in New York while still in his twenties.

€ 3,000 - 5,000



161 A GEORGE IV ROSEWOOD RECTANGULAR FOLDING TOP CARD TABLE,

the plain top above a central tablet and with beaded rim on a turned centre pillar and splayed sabre legs with cast brass toe caps and casters. 92 x 45.5cm

€ 800 - 1,200



162 A SET OF SEVEN SITZENDORF PORCELAIN FIGURES, depicting Henry VIII and six wives, each modelled standing on a titled oval base, factory mark verso. Each approx 21cm high

€ 400 - 600

163 A PAIR OF ENGLISH EARLY 19TH CENTURY PORCELAIN FIGURINES MODELLED AS A SULTAN & SULTANA, each figure standing on a circular base, in richly patterned dress and turbanned, the sultan with a turquoise cape embellished with gold stars; the sultana wearing a purple kaftan; gilt highlights all over, Derby marks under the base 35.5cm high each (2)

€ 1,000 - 1,500



164 A VICTORIAN MAJOLICA STAND, late 19th century, attributed to Thomas Forester, decorated in the Numidian Crane pattern. 50cm high

€ 400 - 600



165 A MARTIN BROTHERS GLAZED POTTERY TOBACCO JAR AND COVER, C.1895, modelled in the form of a standing bird, with detachable head, inscribed 'Martin Bros, London T Southall 10.1895' on circular ebonised base. 24cm high

€ 15,000 - 25,000



166 CHARLES STANFIELD (19TH CENTURY)
Highland River Landscapes
A pair, Oil on canvas, 51 x 76cm
Both signed

€ 500 - 700



168 ROBERT HUGH BUXTON
(B.1871)
Gathering Before the Hunt
Oil on canvas, 39 x 50cm
Signed

€ 300 - 400



167 AFTER CAREL FABRITIUS (19TH CENTURY)
Self Portrait
Oil on canvas, 39 x 32cm
Inscribed verso indistinctly, In carved gesso frame

€ 200 - 300



169 ATTRIBUTED TO ROBERT HUGH BUXTON
(B.1871)
Gathering Hay
Oil on board, 29 x 38cm

€ 150 - 200



170 HENRY ÉTIENNE DUMAIGE (1830-1888)
Avant le Combat, Apres le Combat
Depicting two French Napoleonic Soldiers
A pair, bronze, 65cm tall

€ 3,000 - 4,000



171 A GEORGE III MAHOGANY FOLDING TOP CARD TABLE,
opening to reveal an interior, baise lined and with corner candlestands and counter-wells, the
frieze with small drawer, raised on shell capped cabriole legs on pad feet. 87cm wide x 42cm
deep

€ 1,000 - 1,500



- 172 A LARGE SHAPED RECTANGULAR OAK SIDEBOARD, part of an important early Victorian oak dining suite, attributed to J.E. Crace and Sons, in the manner of Augustus Welby Northmore Pugin, the raised back with carved parcel ends, back with an 'R' monogram above a frieze drawer and twin cupboard doors with linen fold panels, flanked by open compartments with drawers and open portrait panels.

€ 1,000 - 1,500



- 173 AN OAK TWIN DOOR SIDE CABINET, on castors with raised back, 121cm wide, 106cm wide together with an oak rectangular dumb waiter, both part of part of an important early Victorian oak dining suite, attributed to J.E. Crace and Sons, in the manner of Augustus Welby Northmore Pugin. (2)

€ 800 - 1,200



- 174 AN EXTENDING OAK DINING TABLE,
with two canted end rectangular sections extending to enclose three leaves, raised on faceted Gothic legs carved with
rosettes, the hinged leaf clips stamped 'Cope & Collinson, Jan 2, 1840'. 365cm x 162cm wide, part of an important
early Victorian oak dining suite, attributed to J.E. Crace and Sons, in the manner of Augustus Welby Northmore Pugin.

€ 5,000 - 7,000



- 175 A SET OF SEVEN OAK DINING CHAIRS
with rail backs having carved rosettes on chamfered supports and upholstered seat on matching Gothic
chamfered square legs, with stretcher, five stamped 'R'; together with three matching carvers with upholstered
backs, one castor stamped Cope's Paten.
All part of an important early Victorian oak dining suite, attributed to J.E. Crace and Sons, in the manner of
Augustus Welby Northmore Pugin.

€ 3,000 - 5,000

- 176 A CAST BRASS FAN SHAPED SPARK GUARD,
with pierced blades and heavy shell and scroll base.
66cm high

€ 300 - 400





179 AN UPHOLSTERED CAMELBACK SETTEE,
in the Georgian taste, covered in rich yellow damask and raised on square mahogany
legs. 183cm long

€ 600 - 800



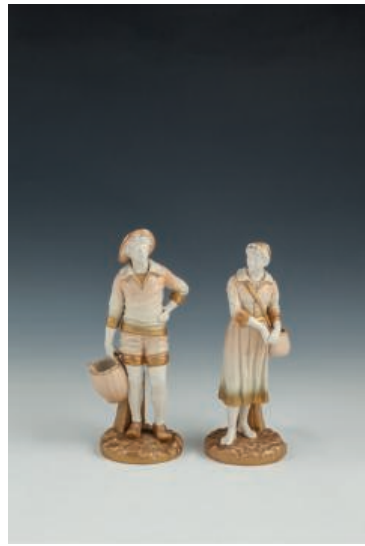
180 A PAIR OF TIMBER FRAMED UPHOLSTERED THREE SEATER SOFAS,
with loose cushions and covered in yellow damask. 183cm long (2)

€ 800 - 1,200



181 A MEISSEN STYLE PORCELAIN FIGURAL CENTREPIECE, modelled as a classical female with youth holding aloft a pierced flower encrusted basket; together with a Japanese Satsuma pottery vase of baluster form, 49cm high and an opaque light shade with classical decoration (3)

€ 100 - 200



183 A PAIR OF ROYAL WORCESTER PORCELAIN FIGURES, of a standing male and female each carrying baskets, decorated in cream, green and gilt, factory mark to base. 20cm high

€ 200 - 300



182 A PAIR OF 19TH CENTURY BRASS SPRING LOADED CANDLESTICKS, with cloisonné columns

€ 500 - 700



184 A COPELAND PORCELAIN 19 PIECE FRUIT SERVICE, comprising one tall tazza, four circular comports, an oval serving dish and 13 side plates. (19)

€ 200 - 300



185 A COALPORT TWO HANDED URN AND COVER,
painted by Keeling, decorated with a romantic scene entitled 'La Conversation Galante' and signed 'T. Keeling', gilded on a rich blue ground bearing crown mark and Rd.296071. 35cm high

€ 800 - 1,200

186 A VICTORIAN TWO HANDED VASE,
the turquoise blue ground encrusted with gilt and porcelain foliate and leaf scrolling decoration enclosing two central reserves depicting continental landscape scenes, and raised on circular socle. 37cm high, 27cm over handles

€ 800 - 1,200



187 A PAIR OF ROYAL CROWN DERBY GILT EMBELLISHED OVOID VASES
c.1900, each with deep blue ground decorated with moulded and gilded foliate motifs

€ 600 - 800



188

SPANISH SCHOOL, 19TH CENTURY

St. Aloysius Gonzaga Bidding Farewell to his Home

Oil on canvas, 70 x 99cm

Contained within a Florentine gilt frame

€ 500 - 1,000

189

AFTER HOFFMANN

Moses and the Pharaoh's Daughter

Oil on canvas, 156 x 125cm

€ 600 - 1,000



190

ITALIAN SCHOOL, 18TH CENTURY

Oil on canvas, 108 x 130cm

€ 1,000 - 1,500





191 AFTER POUSSIN
Saint John the Baptist Preaching by the River Jordan
Oil on canvas, 99.5 x 138cm

€ 1,500 - 2,000



192 A PAIR OF GEORGE IV INLAID ROSEWOOD FOLDING TOP
CARD TABLES,
the tops crossbanded with birds eye walnut, raised on shaped rectangular
tapering centre pillar on shaped quadruped base with ball feet. 91cm wide,
45cm deep, 75cm high

€ 1,000 - 1,500



193

A GEORGE III MAHOGANY SHAPED RECTANGULAR FOLDING TOP GAMES TABLE, the interior fitted with green baize, square corner candle stands and counter wells, raised on shaped circular legs and pad feet. 70cm wide, 36cm deep, 73.5cm high

€ 500 - 700

194

A VICTORIAN MAHOGANY LONGCASE CLOCK, the arch top hood enclosing a white enamel dial, the plain case raised on platform base. 186cm high

€ 300 - 500



195

A LARGE GEORGIAN STYLE MAHOGANY RECTANGULAR CHEST, the hinged top above five false drawers and four long drawers with brass drop handles and rased on ogee bracket feet. 173cm wide, 53cm deep, 103cm high

€ 400 - 600



196 A RECTANGULAR PARCEL GILT COMPARTMENTED OVERMANTLE MIRROR
with moulded cornice above reeded frieze and decorated with oval patternae with astragal panelled sides and raised on platform base. 130cm wide, 82cm high

€ 300 - 500

197 A VICTORIAN PALE ROSEWOOD SHAPED RECTANGULAR SIDE TABLE
with moulded rim and raised on reeded tapering end supports with cross stretcher and scroll feet. 98cm wide, 53cm diameter, 73cm high

€ 400 - 600



198 AN IRISH GEORGIAN STYLE DOUBLE CHAIR BACK SETTEE
with leaf scroll carved crest rail above pierced vase shaped splats with padded seat covered in yellow damask and raised on square supports, in the manner of Butler's of Dublin. 145.5cm wide

€ 600 - 1,000





199 A. HULK (19TH CENTURY)
Extensive Marine View of a Busy Shipping Lane
Oil on canvas, 46 x 76cm
Signed

€ 1,000 - 1,500



200 A REGENCY INLAID MAHOGANY SOFA TABLE,
the double drop leaf top decorated with rosewood banding and brass stringing above twin frieze
drawers with brass knob handles and raised on turned centre pillar and platform base on leaf
carved and reeded sabre legs. 149cm long (open), 68cm wide, 71cm high

€ 1,000 - 1,500



201 AN 18TH CENTURY QUEEN ANNE WALNUT VENEERED BUREAU CABINET, with a flat double domed cornice above twin mirror panel doors enclosing a fitted interior above twin candle slides on a slope front base, with well fitted interior and raised on two short and two long cockbeaded drawers with brass drop handles and raised on bracket feet. 120cm wide, 180cm high

Provenance: Purchased from Harrods, Knightsbridge, London, 7th December 1928

€ 5,000 - 8,000



202 A CHINESE BLUE AND WHITE PORCELAIN DISH, late 17th century, Kangxi period, finely painted with figures and pagodas by a mountain and riverscape encircled by panels of butterflies and chrysanthemum groups, divided by lobed segments. 23cm diameter

€ 250 - 350



204 A JAPANESE 18TH CENTURY KOIMARI DISH, 18TH CENTURY, of shallow circular form, with lobed rim and painted with flower heads and reeds within twin concentric bands, 26cm diameter; together with another smaller example; and a Japanese 19th Century bowl, 22cm diameter. (3)

€ 250 - 350



203 A JAPANESE 18TH CENTURY BLUE AND WHITE CHARGER, of circular form with wavy rim, painted with insects flowers and foliage, four character marked to underside. 35cm diameter

€ 200 - 300



205 A JAPANESE BLUE AND WHITE CHARGER, 19th century, painted with ducks and fish amongst reeds, between cobalt blue bands, highlighted in gilt, 4 character mark. 34 cm diameter.

€ 120 - 180



206 A CHINESE FAMILLE VERTE DISH, early 18th century, of shallow circular form, enamelled with flowering chrysanthemums and insects with gilt highlights. 23cm diameter; together with a Yung Cheng cockeral dish in famille verte enamels. 23cm diameter; together with an 18th century export dish painted with antiques and auspicious symbols 'en grisaille'. 22.5cm diameter; also with an export ware saucer dish. 17cm diameter (4)

€ 200 - 300



208 A PAIR OF CHINESE 'SILVER SHAPED' BLUE AND WHITE DISHES, 18th century. 22cm diameter; together with an export dish of quatrefoil shape. 20cm wide (3)

€ 200 - 300



207 A CHINESE PALE JADE PENDANT, carved in relief with a seated Guanyin and Chinese text verso. 18cm high

€ 100 - 200



209 A CHINESE BLUE AND WHITE DISH, Kangxi period, late 17th/early 18th century, painted to the centre with pagodas against a rocky river landscape, within a raised moulded border with multiple lobed segments and gilt edged rim. 25cm diameter

€ 200 - 300



210 A TIBETAN BRASS AND SILVER MOUNTED EWER AND COVER, 19th century, the domed cover with pointed finial and body applied with mythical beast handle and repeated to the spout, applied with auspicious symbols on spreading circular foot, 32cm high

€ 500 - 800



212 A TURKISH MAMALUQ REVIVAL BRASS CANDLESTICK, 18th Century, with flared rim, knopped stem and domed spreading base, engraved with bands of Kufic text, 35cm high.

€ 300 - 500



211 AN ISLAMIC BRASS AND SILVER INLAID BOWL OF SQUAT CIRCULAR FORM, 17cm diameter.

€ 300 - 400



213 AN 18TH CENTURY SAFAVID TINNED COPPER DISH, engraved with floral medallion encircled by stylised text, 22cm diameter, together with an Arabic silvered vase, 16.5cm high.

€ 200 - 300



- 214 AN IZNIK STYLE BLUE AND WHITE KENDI of lobbed globular form, decorated with panels filled with scattered leaves and flower heads on a waisted circular foot, 23cm high, together with a Turkish salt glazed vessel, modeled in the form of a tiger attacking an antelope, 22cm high. (2)

€ 300 - 500



- 216 A JAPANESE PORTABLE SHRINE, 19th century, the black lacquer case enclosing an intricately carved Buddhist deity with red and gilt highlights. 9cm high; together with a 19th century bronze model of an iron maiden, on timber base. 13.5cm high (2)

€ 100 - 150



- 215 A COLLECTION OF EGYPTIAN AND ROMAN ANTIQUITIES, including an ancient steatite bottle of globular form, 12cm high; a Roman terracotta two handle flask, 8.5cm high; an Egyptian fertility figure, 10cm high; an old clay pipe; a terracotta oil lamp, 9cm long; and a globular pottery vessel. (6)

€ 200 - 300



- 217 A JAPANESE PORCELAIN GROUP OF A BINJIN SEATED, holding a scroll and wearing a colourful kimono, with oijime in attendance. 23cm high; together with a crackle ware glazed model of a scholar. 20cm high (2)

€ 150 - 250



- 218 A COLLECTION OF ISLAMIC ITEMS, including a silver inlaid pen box, 19th century, 24cm long; an early brass candlestick, 21cm high; an enamelled olive green glass vessel and two ancient Palestinian bronze spearheads, c.2200 B.C.

Provenance: Bernard C. Pickering, Dorset, with receipt dated 1983

€ 200 - 300



- 220 AN ASHIRA BPUNA STILT DANCER'S MASK, Gabon, early 20th Century, carved in the form of a young female, partially covered in white pigment. 28cm high

€ 200 - 300



- 219 TWO JAPANESE FAMILLE VERTE DISHES, probably 18th century, each of circular form with wavy rim, painted with birds, flowering plants and medallions. 21cm wide

€ 100 - 200



- 221 AN AFRICAN HIDE TWO HANDLE BOWL AND COVER; together with a red and black overlay papier mache bowl; and a brass figure of a colonist. (3)

€ 100 - 150



222 AN AFRICAN CARVED TRIBAL ART GROUP, YUROBA, NIGERIA, modelled as a figure on horse back; together with a Pende helmet mask, 19th/20th Century. (2)

€ 200 - 300



224 A JAPANESE BRONZE CIRCULAR BOX AND COVER, engraved with scattered leaves picked out in mixed metals, with inscription to base. 15cm diameter

€ 150 - 250



223 A 19TH CENTURY PERSIAN LACQUERED OBLONG CASE AND COVER, painted with animals and geometric scrollwork to each side.

€ 100 - 200



225 A LARGE BRASS AND SILVER INLAID CAIRO-WARE CHARGER, 74cm diameter; together with a Persian brass wall panel centred by a hunter on horseback and encircled by a broad band of various animals. 54cm diameters (2)

€ 150 - 250



226 INDIAN SCHOOL (20TH CENTURY)
 Rama with Female Attendants
 A pair, each 20 x 13cm;
 Together with an Indian Erotic Scene
 Oil on paper with gilt highlights, 24.5 x 16cm.
 (3)

€ 200 - 300

227 INDIAN MINIATURE SCHOOL (20TH CENTURY)

Indian Wedding Procession
 Gouache and gilt on paper, 26 x 37cm;
 Together with a small collection. (5)

€ 200 - 300



228 A CHINESE CARVED FRUITWOOD SHAPED
 CIRCULAR JARDINERE STAND,
 the top with inset marble and raised on heavily carved and
 pierced apron and four stylised cabriole legs and stretchers.
 44cm diameter, 45cm high

€ 150 - 250





229 A CHINESE CARVED FRUITWOOD CIRCULAR JARDINIÈRE STAND, the top with inset marble and raised on heavily carved and pierced apron and four stylised cabriole legs and stretchers. 52cm diameter, 49cm high

€ 150 - 250



231 A CHINESE CARVED FRUITWOOD SETTEE, the back decorated with dragons and flowerheads and with inset marble panels above a solid panel seat, the armrests with dragon head terminals and raised on pierced apron and cabriole legs. 176cm long

€ 600 - 1,000



232 A GEORGE IV MAHOGANY WINE COOLER of sarcophagus form, the thumb moulded rim above beaded frieze, flanked by acanthus capped pillasters, with scroll terminals, raised on platform base. 49cm high, 74cm wide, 55cm deep

€ 700 - 1,000

233 A REGENCY MAHOGANY CYLINDER TOP DESK, with tambour front and compartmented interior and fold-out writing surface with leather scriber, above a single frieze drawers and two short drawers, raised on square tapering legs with brass castors. 91cm wide

€ 800 - 1,200



234 A 19TH CENTURY MAHOGANY AND LEATHER INSET WRITING TABLE, c.1860, of rectangular form with tooled leather scriber above a pair of twin frieze drawers on trestle end supports

€ 300 - 400



235 A GEORGE III WALNUT SECRÉTAIRE CHEST-ON-CHEST, with pierced and blind fret decoration, above two short and two long cockbeaded drawers and fall front writing drawer with fitted interior, flanked by reticulated fretwork quarter pillars on a base fitted three long drawers with brass drop handles and raised on bracket feet. 174cm high x 112cm wide

€ 2,500 - 3,500



236 A LATE 18TH CENTURY INLAID MAHOGANY RECTANGULAR BOX, the slightly arched hinged lid with brass knob, decorated with holly and satinwood oval ribbon and leaf motif with in boxwood stringing and enclosing a compartmented interior. 20.2cm x 13.3 x 14cm high

€ 60 - 100

237 A VICTORIAN ROSEWOOD AND INLAID CENTRE TABLE, with moulded rounded corners, the top inlaid with a paterae, raised on twin bobbin turned supports joined by a baluster shaped stretcher. 86cm x 42cm

€ 300 - 400



238 A 19TH CENTURY MAHOGANY RECTANGULAR DOUBLE DROP LEAF PEMBROKE TABLE, fitted single frieze drawer and raised on square tapering legs. 81 x 48cm closed

€ 150 - 200



239 A VICTORIAN MAHOGANY BOOKCASE,
the moulded cornice above three arched glazed panel doors enclosing shelves and raised on a conform-
ing cupboard base. 221 x 260cm tall

€ 1,000 - 2,000



240 AN EARLY 19TH CENTURY INLAID WALNUT OCTAGONAL FOLDING-TOP CARD TABLE with rosewood crossbanding and boxwood stringing, raised on square tapering legs and spade feet. 91 x 45cm

€ 300 - 400



242 A GEORGE III MAHOGANY SHAPED RECTANGULAR SNAP TOP SUPPER TABLE with reeded rim and raised on turned centre pillar and tripod supports. 59 x 76cm

€ 250 - 350



241 A 19TH CENTURY INLAID WALNUT AND MAHOGANY CRUTCH FRAME TOILET GLASS, the side columns supporting an oval plate. 46cm wide, 68cm high

€ 60 - 100



243 A GEORGIAN MAHOGANY CRUTCH FRAME TOILET GLASS, the square side columns supporting a rectangular plate with moulded rim, raised above a base fitted with three drawers on bracket feet. 41cm wide, 66cm high

€ 150 - 250



244 A GEORGIAN MAHOGANY LOG BUCKET with brass banded reeded body and brass swing handle. 46cm high, 39cm diameter

€ 800 - 1,200

245 A MAHOGANY FRAMED OFFICE ARMCHAIR, the raised back, armrests and bowfront seat buttoned and covered in dark green hide, raised on turned column legs.

€ 400 - 500



246 A REGENCY MAHOGANY FRAMED SWIVEL OFFICE ARMCHAIR, with raised padded back, armrests and circular seat covered in green hide and raised on four reeded tapering legs and brass feet and casters

€ 400 - 500



247 STYLE OF JAMES ARTHUR O'CONNOR
(1792-1841)

Figure crossing a bridge
Oil on panel, 20 x 25.5 cm (8 x 10")

€ 800 - 1,200



249 CONTINENTAL SCHOOL (19TH CENTURY)

Shipping off the Coast
Oil on canvas, 33.5 x 50cm

€ 400 - 600



248 ITALIAN SCHOOL, 20TH CENTURY

View on the Via Appia Antica, Rome
Oil on board, 39 x 49cm (15½ x 19¼")
Signed indistinctly

€ 250 - 350



250 J.F. DAY

Figure in a Wooded Winter Landscape
Oil on canvas, 32 x 52cm

€ 300 - 400

251 AFTER JAMES ARTHUR O'CONNOR
(1792-1841)
Figure on a Path in Coastal Landscape
Oil on canvas, 42 x 52cm (16½ x 20½")
Signed

*Provenance: The Grace Pym Gallery, Dublin, 1982,
where purchased by present owner*

€ 2,000 - 3,000



252 THOMAS ROSE MILES RCA
(FL.1869-1910)
Wind and Sea Rising, Evening
Yarmouth Roads
Oil on canvas, 39,5 x 65cm
Signed. Inscribed with title verso.
GW Knight framing label verso.

€ 800 - 1,200



253 IRISH SCHOOL
Cattle Watering Near the Sugar Loaf
Oil on canvas, 24 x 29cm

€ 500 - 800





254 WILLIAM WALKER, 19TH CENTURY
Half-length portrait of a Young Girl dressed in white holding a basket of apples
Oil on canvas, 61 x 46cm
Signed and dated 1896

€ 800 - 1,200



255 A VICTORIAN ROSEWOOD AND MARBLE TOPPED BREAKFRONT SIDE CABINET,
mid 19th century, of shaped rectangular form, the fitted top above twin glazed panel doors
flanked by blind fret cupboard sections enclosing a shelved interior on plinth base. 213cm wide

€ 800 - 1,200



256 JOHANN JOSEF GEYER (GERMAN, 1807-1875)
The Proposal
Oil on canvas, 109,5 x 140cm
Signed and dated 1853

€ 5,000 - 7,000



257 A GEORGE IV INLAID ROSEWOOD SHAPED RECTANGULAR LIBRARY TABLE,
the top cross banded with walnut above twin frieze drawers and raised on flat end supports, reeded
and turned cross stretcher and raised on scroll feet. 150cm long, 75cm deep, 79cm high

€ 700 - 1,000



258 A SMALL EDWARDIAN INLAID MAHOGANY
DOME TOP CLOCK

€ 50 - 100



260 AN IRISH KILLARNEY WORK ARBUTUS
BOX AND COVER,
19th century of rectangular form, inlaid with a
depiction of Muckross Abbey, Killarney

€ 200 - 300



259 AN EDWARDIAN OAK CASED
BRACKET CLOCK,
with applied cast brass mounts

€ 300 - 500



261 A RUSSIAN BRASS OVERLAID ICON,
late 19th century, depicting Madonna and Child,
oil on poplar panel. 36 x 31 cm

€ 300 - 500



262 A FRENCH GILT METAL AND PORCELAIN MOUNTED THREE PIECE CLOCK GARNITURE, the clock surmounted by a classical urn and floral swag above a painted circular dial centred with a band of flowers and encircled by Roman numerals, on a shaped outset base, with a pair of three piece candelabra. The clock 35cm high

€ 250 - 400



264 A PAIR OF 19TH CENTURY CAST-BRASS CANDLESTICKS IN THE BAROQUE STYLE, each modeled with square sockets balanced on dolphins and square outset bases, 23cm high.

€ 200 - 300



263 A FRENCH GILT METAL AND PORCELAIN MOUNTED THREE PIECE CLOCK GARNITURE, the clock surmounted by a classical urn over a drum shaped case fitted with a painted and enamelled dial with Roman numerals, over baluster column support, flanked by figures, on outset base; together with a pair of associated urns. The clock 43cm high

€ 250 - 400



265 A REGENCY BLUE GLASS AND GILT DECORATED SUGAR BOX AND COVER, probably Dublin, c.1820, of circular form, surmounted with faceted finial, gilt marked 'S' above a continuous trail of vines and leaves. 14cm high; together with a dark ruby and gold flake glass bowl, of shallow circular form. 13cm diameter (2)

€ 200 - 300



266 A CONTINENTAL MARBLE FIGURE OF A CLASSICAL FEMALE,
19th/20th century, modelled nude and lying on a rectangular plinth base. 61 x 42 x 19cm

€ 1,000 - 1,500



267 A VICTORIAN RECTANGULAR ROSEWOOD AND MARQUETRY INLAID
CENTRE TABLE,
with fitted frieze drawer and decorated with floral arabesque panels and applied gilded
metal mounts, raised on fluted tapering legs joined by shaped cross stretcher. 139cm

A FRENCH BLUE ENAMEL AND ORMOLU MOUNTED LYRE-SHAPE MANTLE CLOCK,
19th century, surmounted with a sunburst mask and pendant floral swags above a circular white enamel dial with arabic numerals,
signature indistinct, surrounded by a 'jewelled' ring of paste set stones on an outset oval base. 52cm high

€ 4,000 - 6,000





- 269 A CAST BRASS INK STAND,
with a pair of griffons flanking a baluster urn shaped ink
well with hinged domed lid. 29cm long x 12.5cm high;
together with a rectangular boule desk stand with twin
inkwells and compartment above a concave penwell.
35 x 25.5cm (2)

€ 300 - 500

- 270 AN ELM WINDSOR ARMCHAIR
with central splat and spindle back and an-
other Windsor chair with spindle back. (2)

€ 120 - 180



- 271 A FRENCH BRASS AND POLISHED STEEL FENDER,
19th century, decorated with a frieze of continuous Greek Key and sur-
mounted by four spherical finials. 141cm wide

€ 400 - 600



272

A 19TH CENTURY OVAL EBONISED AND PARCEL GILT WALL MIRROR, the moulded frame decorated with applied plain and prism cut glass studs in two bands. 51 x 41cm

€ 300 - 400



273

A VICTORIAN MAHOGANY EXTENDING DINING TABLE, 19th century, the plain moulded top on fluted tapering supports and heavy porcelain castors.

€ 600 - 1,000

274

A SET OF NINE WILLIAM IV MAHOGANY FRAMED DINING CHAIRS, each with curved top rail and cross-bar, with upholstered drop-in seat and turned tapering supports. (9)

€ 300 - 500



275 A DARK STAINED OAK BENCH, 18TH CENTURY,
with quintuple panelled back, on a box base with triple panelled
frieze, on short turned feet. 79cm high x 149cm wide

€ 300 - 500

277 A PAIR OF BLACK STAINED TALL BACK
OPEN ARMCHAIRS,
with plank seats

€ 100 - 200



278 A BLACK STAINED PANELLED BACK OPEN ARMCHAIR,
17TH CENTURY,
of large proportions with scrolled arms.

€ 500 - 800



279

AN OAK DRAWER FRONT COFFER,
17TH CENTURY,
panelled mouldings, planked lid, the frieze with
initials.
123 x 53 x 82cm (high)

€ 700 - 1,000

280

A CARVED OAK PANELLED FRONT COFFER,
BASICALLY 17TH CENTURY,
with stylised fruitwood decoration, on plank feet.
146 x 57cm

€ 300 - 500



281

A PANELLED FRONT COURT CUPBOARD
with recessed top, the base with two panelled doors, iron
butterfly handles, basically c.1700.
161cm high x 127cm long, 52cm deep

€ 1,500 - 2,500



282 AN EARLY VICTORIAN MAHOGANY CHIFFONIER SIDECABINET, with raised panel back and shelf above twin panel doors flanked by turned engaged columns and raised on lobed bun feet. 129 cm wide, 157.5cm high

€ 250 - 350



284 A ROSEWOOD AND BRASS INLAID OCCASIONAL TABLE, 19th century, of rectangular form, fitted with single frieze drawer and opposing dummy drawer and rope twist tapering supports and castors. 51 x 35cm

€ 200 - 400



283 A FRENCH FRUITWOOD CIRCULAR JARDINIÈRE with applied brass ring handles and raised on cabriole legs with applied brass feet. 41cm high, 28cm diameter

€ 100 - 200



285 A GEORGIAN MAHOGANY SQUARE WASHSTAND with plain top above a centre tier fitted with a single drawer above a shaped lower tier the entire raised on plain square supports. 37cm x 36.5cm x 80cm high

€ 150 - 200



286 A FRENCH BRASS AND MILK GLASS EIGHT LIGHT CHANDELIER,
the baluster and bell shaped column supporting foliate scroll formed branches.
84cm high

€ 1,500 - 2,500



287 A VICTORIAN MAHOGANY AND LEATHER INSET WRITING TABLE,
the rectangular top with moulded edge over three short frieze drawers on turned
baluster supports and brass castors

€ 800 - 1,200



288

A 19TH CENTURY WALNUT FRAMED LOOP BACK BERGERE ARMCHAIR, the crest rail and seat fascia carved with incised bellflower decoration, having loose squab cushion and raised on sabre legs.

€ 250 - 350

289

A 19TH CENTURY FRENCH PROVINCIAL FRUITWOOD SERPENTINE FRONT COMODE, the moulded top above twin drawers carved with scrolls and having applied brass drop handles, raised on carved cabriole legs and scroll feet. 100cm x 57cm x 79,5cm high

€ 300 - 400



290

A SET OF SIX VICTORIAN PALE OAK RAIL BACK DINING CHAIRS in the manner of Pugin, having padded seats and raised on chamfered square column legs.

€ 300 - 400



291

A 19TH CENTURY INLAID MAHOGANY HALF CIRCULAR FOLDING TOP CARD TABLE, with boxwood stringing and chequered banding raised on square tapering legs. 92 x 45.5cm

€ 300 - 500

292

A GEORGE III MAHOGANY RECTANGULAR SIDE TABLE with plain top raised on a base with shell capped cabriole legs and pad feet. 53 x 75.5cm

€ 400 - 600



293

A PAIR OF GEORGE IV INLAID SATINWOOD RECTANGULAR FRAMED BERGERE ARMCHAIRS, fitted with two loose squab cushions and raised on square tapering legs, brass feet and castors.

€ 500 - 800



295 A SET OF ELEVEN 19TH CENTURY MAHOGANY FRAMED DINING CHAIRS,
by Burrows of Cork, with curved rail backs and upholstered seats on square reeded tapering legs(11)
€ 3,000 - 5,000



296 GEORGE CAMPBELL
A Wreck at Sea
Oil on canvas, 45 x 66cm

€ 500 - 800



297 A GEORGE III D-END MAHOGANY ECONOMY DINING TABLE,
raised on square tapering legs. 340 x 142cm

€ 2,000 - 4,000



298 A PAIR OF VICTORIAN BOHEMIAN RUBY OVERLAID GLASS VASES, each with shaped serrated rim, the body decorated with enamel painted reserves of portraits, surrounded by foliate highlights and raised on circular spreading base. 35cm high x 15cm diameter

€ 300 - 500



301 A PAIR OF 19TH CENTURY TALL FACET CUT GLASS CANDELSTICKS, raised on square lemon squeezer bases. 43cm high

€ 400 - 600



299 A LARGE VICTORIAN CRANBERRY GLASS JUG, with crimped rim and clear glass moulded ribbed handle, the body with faceted design. 24.5cm high; together with a pair of cranberry glass lamps, the knopped stems with clear glass moulded beaded decoration, and mounted on circular brass base, converted for electricity. (3)

€ 300 - 400



300 A SMALL OLIVE GREEN SILVER MOUNTED CUT GLASS DECANTER AND STOPPER, London 1911, maker's mark of Army & Navy Co-operative Society Ltd, with applied glass handle. 16.5cm tall

€ 150 - 250



302 A PAIR OF VICTORIAN PINK PORCELAIN BALUSTER TABLE LAMPS, decorated with Classical Roman figures, transfer printed, and with brass oxidised bases, adapted for electricity. 45cm high

€ 250 - 350

303 A FRENCH EBON AND OLIVEWOOD
'RÉGENCE' PATTERN CHESS SET,
late 19th Century, the Kings approximately 9.5cm
high, along with a satinwood and rosewood
chessboard. 43 x 32cm

€ 300 - 500



304 A PERSIAN WOOL CARPET,
20th century, of rectangular form, with broad centre field woven with
scattered motifs against red ground and contained within cream border.
280 x 148cm

€ 500 - 800

305 A PERSIAN RED GROUND WOOL
CARPET,
20th century, woven with geometric lozenges and
scattered motifs, within multiple guard stripes
and borders. 300 x 220cm

€ 600 - 800



306 A TURKISH WOOL CARPET,
20th century, the large centre field woven with an
elongated lozenge filled with three pointed me-
dallions against a deep blue ground with rows of
flowerheads and geometric borders. 210 x 144cm

€ 400 - 600





307 A CONTINENTAL FAUX MARBLE BUST,
of 20th century after the antique, on square plinth base. 50cm

€ 200 - 300

308 A PLASTER CAST BUST OF A ROMAN,
after the antique, on circular socle base. 65cm high

€ 300 - 500



309 A 20TH CENTURY BRONZED
GROUP MODELLED AS AN
ANTELOPE,
on black marble plinth. 29cm high x 40cm
wide

€ 300 - 500





310 J. CLESINGER (ITALIAN C.1864)
Classical Female Figures Holding Floral Boughs
A pair, patinated bronze, each 47.5cm high
Signed and with foundry mark of Ferdinand Barbedienne

€ 1,200 - 1,800



311 AN ART DECO STYLE BRONZED GROUP,
modelled as Thompson's Gazelles, standing on sienna marble base, signed Rucholi. 25cm high
x 38.5cm wide

€ 400 - 600



312 18TH CENTURY SCHOOL
Portrait of a Gentleman, Thought to be
Lord Birmingham
Oil on canvas, 75x62cm, unframed

€ 400 - 600



314 A 19TH CENTURY ARTIST'S SKETCHBOOK,
filled with watercolours depicting various Turkish and Greek
landmarks, each titled and dated to 1884

€ 200 - 300



313 ELIZABETH RIVERS (1903-1964)
Woman with Harp
Pen and Ink, 48.5 x 38.5cm

Provenance: From the Artist's Estate

€ 200 - 300



315 PETER J. NEUMANS (VICTORIAN
SCHOOL)
Sheep Grazing in an Orchard
Oil on panel, 13.5 x 16.5cm
Signed and dated (18)77. Inscribed indistinctly verso

€ 200 - 400



316 ALDOLF SCHREYER (1828-1899)
Loading firewood in the snow
Oil on canvas, 67 x 92cm
Signed and dated '1892 LR'

€ 3,000 - 5,000



317 A MID 19TH CENTURY INLAID MAHOGANY RECTANGULAR
KNEEHOLE SIDEBOARD,
the plain top raised above a central short drawer, flanked by twin deep drawers with
cast brass ring handles and raised on chamfered square supports. 124cm wide x
54cm deep

€ 500 - 800



318 GEORGE HENRY BOUGHTON RA (1833-1905)

A 17th Century Style Interior Scene with a thoughtful gentleman

Oil on canvas, unframed, 97 x 143cm

Boughton was born in Norwich, Norfolk, England, the son of farmer William Boughton. The family emigrated to the United States in 1835, and he grew up in Albany, New York where he started his career as a self-taught artist. At this early stage he was influenced by the artists of the Hudson River School. Boughton exhibited extensively in both Britain and USA, and was elected a member of the National Academy of Design in New York in 1871. He was elected a member of the Royal Institute of Painters in Watercolours, an Associate of the Royal Academy (ARA) in 1879, and a Royal Academician (RA) in 1896. His subject matter largely included illustrations of American colonial history.

€ 800 - 1,200



319 A GEORGE IV INLAID MAHOGANY SERPENTINE FRONT SIDEBOARD,

with fitted drawers and cupboards, decorated with satinwood crossbanding, having oval brass drop handles, raised on square tapering legs. 187cm

€ 1,000 - 2,000



320 A RARE 18TH CENTURY IRISH MAHOGANY LONG CASE CLOCK, by James Aickin (fl. 1738-1780), Cork, the domed hood with fluted columns enclosing a brass dial inscribed 'James Aickin, Cork', the dial surrounded by applied foliate decoration, raised on a waisted case with single door. 206cm tall

€ 3,000 - 5,000



321 A JAPANESE CARVED PAPIER MACHE FIGURE OF A SEATED SHINTO PRIEST, (Tenjin), late 19th century, with adjustable head. 45cm high
€ 400 - 600



323 A LARGE JAPANESE IMARI PORCELAIN CHARGER, Meiji period, of shallow circular form, decorated with panels of foliage in traditional palette. 56cm diameter



322 A TIBETAN THANKA PAINTING, 20th century, painted with a seated Buddha, surrounded by figures and deities in a garden setting. 67 x 48.5cm
€ 200 - 400

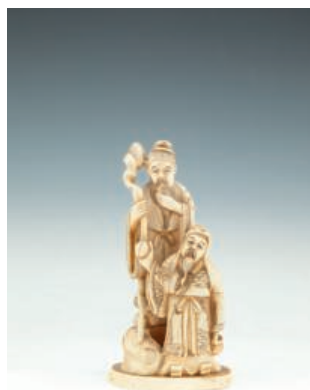


324 AN INDIAN BRONZE FIGURE OF GENESH, standing upright wearing traditional Buddhist costume holding various instruments, on an octagonal plinth base
€ 300 - 500



325 A JAPANESE CARVED IVORY OKIMONO,
19th century, of a kneeling figure holding an oijime, signed.
5cm wide

€ 100 - 200



327 A JAPANESE CARVED IVORY
OKIMONO,
19th century, of a sage, standing with
staff and attendant on oval naturalistic
base. 12cm high



326 A JAPANESE CARVED IVORY MODEL OF
A STARTLED HORSE,
19th century, standing on three legs, signed. 7cm
wide

€ 100 - 200



328 A JAPANESE CARVED IVORY OKIMONO,
modelled as a figure standing atop a carp, signed.
16cm high

€ 100 - 200



329 A 19TH CENTURY MAHOGANY STICK BAROMETER.
95cm tall

€ 800 - 1,000



330 A MAHOGANY CRUTCH FRAMED CHEVAL MIRROR, c.1900, the oval adjustable plate between tapering upright supports on splayed legs and castors. 160cm high x 76cm wide

€ 600 - 800



331 A GEORGE II EBON CASED BRACKET CLOCK, by R. Henderson, the domed top with brass carrying handle above a single, arched glazed door enclosing an engraved glass dial with applied brass spandrels, flanked by grill panel sides and raised on bracket feet, 47cm tall

€ 1,500 - 2,000



332

A CONTINENTAL MARBLE BUST OF VENUS,
signed on the reverse 'Pugis', the classical figure modelled with head turned to the left and raised on a waisted socle base.
46cm high

€ 1,000 - 1,500



333 CONTINENTAL SCHOOL, 20TH CENTURY
Still Life with Flowers, Fruit and Pottery
Oil on canvas, 40 x 50cm (15¾ x 19¾")
Signed indistinctly

€ 200 - 400

334 NEIL SHAWCROSS RHA RUA (B.1940)
Lady and her Cat Seated at a Table
Watercolour, 48 x 58.5cm (16 x 22")
Signed and dated 1977

€ 500 - 700



335 ROBERT EGGINTON (B.1943)
The Twelve Pins from near Roundstone
Watercolour, 28 x 37cm
Signed

€ 250 - 350





336 DONALD MCPHEARSON RUA (1920-1986)
Connemara Golf Club beach
Watercolour, 38 x 54cm
Signed

€ 250 - 350



337 DONALD MCPHEARSON RUA (1920-1986)
Ballinaboy
Watercolour, 55 x 47cm
Signed

€ 400 - 600



338 HELEN RIDGEWAY, 20TH/21ST CENTURY
Roses
Oil on canvas, 50 x 76cm
Signed

€ 300 - 500



339 AMERICAN PHOTOGRAPHS :
A Journey through New York, late 19th century
captured in a collection of 92 photographs, including a ferry journey with images of third class passengers skipping and dancing on deck, crew, street life and notable New York landmarks contained within hardback album

€ 400 - 600



346

A MODERN TEKKE BACARA
WOOL RUG,

the centerfield woven with six rows of octagons divided by quatrefoil motifs to a red ground, contained within bands of broad and narrow borders decorated with geometric designs, medallions, lozenges and beading

€ 400 - 600

347

A 19TH CENTURY OVAL GILT GESSO WALL
MIRROR,

in the Neo-Classical taste, with three-light sconce, the oval glass plate enclosed by gilt frame with beaded borders and trailing bellflowers, surmounted by a classical urn. 97cm tall

€ 300 - 500



348

A FRENCH 19TH CENTURY INLAID WALNUT BEDSIDE CABINET, the top with raised sides above a fall front section enclosing pigeon holes and drawers, raised on slender cabriole legs, the entire with cast gilt metal mounts. 35cm square, 88cm tall

€ 500 - 800



349

AN EARLY VICTORIAN MAHOGANY FRAMED UPHOLSTERED RECLINING ARMCHAIR with moulded frame and scroll armrest terminals, raised on turned supports.

€ 250 - 300



350 AN IRISH GEORGE II MAHOGANY BUREAU BOOKCASE, the moulded cornice above twin panel doors fitted with original bevelled mirror plates and pull out candle slides and interior fitted with pigeon holes drawers and secret compartments, the slopefront applied with brass furniture and fitted interior, single drawer over two short and two long drawers with brass handles, and raised on bracket feet. 99 x 219cm

€ 5,000 - 8,000



- 351 A WILLIAM IV MAHOGANY FRAMED
UPHOLSTERED ARMCHAIR
with curved exposed frame, the button back and seat
covered in ivory damask and raised on scroll top leaf
capped legs.

€ 300 - 500

- 352 A GEORGIAN STYLE MAHOGANY FRAMED
UPHOLSTERED GAINSBOROUGH WINGED
ARMCHAIR
covered in green hide and raised on square legs with cross
stretcher

€ 300 - 500

- 353 AN EARLY 19TH CENTURY GILTWOOD
UPRIGHT RECTANGULAR WALL MIRROR,
with moulded cornice above engaged pillasters flanking
an ebon reeded framed plate on platform base. 69 x
56cm

€ 200 - 400



354 A LATE GEORGIAN MAHOGANY SQUARE SNAP-TOP SUPPER TABLE raised on a box frame and turned centre pillar tripod with pad feet. 51.5 x 51cm

€ 150 - 250

355 AN EARLY 19TH CENTURY MAHOGANY CIRCULAR SNAP TOP SUPPER TABLE with cavetto top and raised on turned and partially spiral reeded centre pillar and tripod supports. 79cm diameter

€ 250 - 400



356 AN EDWARDIAN INLAID MAHOGANY SQUARE REVOLVING BOOKCASE, with pierced lattice sides, raised on a table base with slender cabriole legs and shaped undertier. 46cm x 46cm x 78cm high

€ 300 - 400



357

A 19TH CENTURY MAHOGANY COMPACT CIRCULAR SUPPER TABLE, the snap top with dish rim and raised on turned centre pillar tripod supports. 47.5cm diameter

€ 80 - 120

358

A PAIR OF LATE VICTORIAN BRASS SINGLE BED HEADS AND ENDS with ball finials and turned columns, stamped 'H&S'. 94cm wide

€ 150 - 250



359

A 19TH CENTURY INLAID WALNUT KIDNEY SHAPED WRITING TABLE, the top with inset pale red leather scriber above three frieze drawers and raised on 'X' side supports. 94cm x 59cm

€ 300 - 500





360

A STAINED WOOD APOTHECARY'S CABINET OF DRAWERS, fitted with eleven drawers with glass handles and name plates. 92cm x 24cm x 51cm high

€ 100 - 200

361

A FRENCH LATE 19TH CENTURY MAHOGANY MARQUETRY RECTANGULAR CHEST OF THREE LONG DRAWERS,

with grey marble top, the top drawer with marquetry style decoration and the entire raised on turned tapering legs. 85 x 43cm

€ 300 - 500



362

A PAIR OF NEOCLASSICAL MAHOGANY URNS AND COVERS,

19th century, each domed cover with turned finial and carved with a band of leaves, the ovoid body decorated with Greek Key and acanthus on stepped plinth foot (2)

€ 300 - 500

363 A LARGE CAST BRASS CURB FENDER
with pierced decoration and raised on platform
base. 169.5 x 32cm

€ 150 - 250

364 A 19TH CENTURY BRASS CURB FENDER,
of shaped rectangular form, with outset octagonal
pillasters and rounded corners. 131cm wide

€ 300 - 400



364

365 A LATE 19TH CENTURY CAST BRASS CURB RAIL
FENDER,
with raised scroll ends, the front rail with urn finials on plat-
form base. 138 x 39cm

€ 150 - 250

366 A GEORGE III BRASS AND CAST IRON
FIRE GRATE,
of serpentine form, with engraved pierced brass
grill and flanked by tapering upright supports with
urn finials. 66cm high, 82cm wide; together with
assorted fire brasses.

€ 500 - 800





367 A CHESTERFIELD BUTTON BACK SOFA,
covered in olive green hide. 203cm wide x 90cm deep x
74cm high

€ 400 - 600



369 A PAIR OF MODERN UPHOLSTERED TWO
SEATER SOFAS,
with loose cushions covered in navy blue damask
material. 150cm wide x 92cm deep x 77cm high

€ 500 - 700



368 A FINE VICTORIAN STAINED OAK BEDROOM SUITE,
c.1890, comprising:

- a breakfront wardrobe, with architectural pediment and central cupboard section flanked by angled mirrored doors
- a marble top washstand, with raised superstructure and adjustable mirror above twin cupboard doors and ring turned supports
- a dressing table of conforming design
- a small double drop leaf bedside night table, with carved panel cupboard section and plain undertier on turned supports and castors (4)

€ 1,000 - 1,500

370 A PERSIAN WOOL RUG,
the off-white ground decorated with all-over foliate scrollwork within multiple borders and guard stripes in pale blues, red and pink. 400 x 292cm

€ 700 - 1,000



371 A 19TH CENTURY LOUIS SEIZE KINGWOOD AND BRASS DOUBLE BED
with reeded pillars and arched crest rails, completed with side rails. 150cm wide

€ 250 - 350



372 AN EARLY 19TH CENTURY FADED MAHOGANY OVAL DOUBLE DROP LEAF TABLE,
raised on plain square supports. 92 x 40cm closed

€ 150 - 200



373 A 19TH CENTURY ELM RECTANGULAR CHEST,
the top opening to reveal a naively painted inside lid, together
with various compartments and drawers and having rope side
handles. 82cm x 44cm x 40cm high

€ 150 - 200



374

A GEORGE III INLAID MAHOGANY
LARGE CORNER CABINET,
the architectural pediment above two glazed
astragal doors, above a cupboard door base,
the cupboard boards decorated with marquetry
classical urns and stringing, raised on bracket
supports. 94 x 247cm tall

€ 1,500 - 2,000



375

A 19TH CENTURY MAHOGANY BOOKCASE,
the glazed top with fitted shelves on a table base, with secretaire
drawer on square tapering legs. 108cm wide

€ 1,000 - 2,000



376 A COLLECTION OF 19TH CENTURY AND LATER FANS, with a number of fine hand painted examples: including a faux tortoiseshell brisé fan decorated with chinoiserie scenes in gilt tones, and a French example with a wooden framework decorated with painted pugs in an interior fighting for a ball and inscribed 'La Lutte pour la ballon', and a carved ivory brisé fan (8).
Provenance: The estate of Anne Bullitt

€ 400 - 600



379 A 19TH CENTURY COPPER TWO HANDED TEA URN, of classical form, the detachable cover with globular finial and body with out-turned floral cast rim, with turned ebon side handles, and raised on concave platform base over cast anthemion feet
€ 200 - 350



377 A NEAR PAIR OF CUT CRYSTAL SHIP'S DECANTERS AND STOPPERS, each also bearing a porcelain Staffordshire decanter label, one marked 'Brandy, the other marked 'Sherry'.

€ 100 - 150



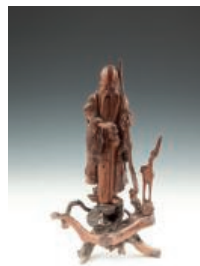
380 A THAI CARVED BONE VESSEL, 19th/20th century, of waisted form, profusely decorated with figures, monkeys and deities against a pierced ground. 23cm high

€ 150 - 250



378 A MINTONS BLUE AND WHITE PART TOILET SET, comprising transfer printed jug and basin, decorated with chinoiserie landscapes, with matching swing handle pail, fitted liner, and associated blue and white wares (5)

€ 300 - 400



381 A JAPANESE ROOTWOOD CARVING OF FUKUROKUJU, 19th century, the God of Wisdom, modelled in standing position holding a peach in one hand, a staff in the opposing hand, with a crane by his foot. 33cm high

€ 300 - 500



382 A 19TH CENTURY FRENCH CLOCK GARNITURE OF PINK 'SEVRES' STYLE PORCELAIN WITH GILT BRASS MOUNTED FOLIATE DECORATION, SWAGS AND CHERUB MUSICIANS, the figural clock with porcelain dial, Roman chapter ring tied swags and putti to the base. 39cm high x 30cm wide; and a near pair of five branch candelabra. 52cm high. (3)

€ 800 - 1,200



384 A GEORGE III STAFFORDSHIRE ENAMEL PATCH BOX, C.1800, of oval form with hinged cover decorated with a landscape within oval reserve and encircled by gilt flowerheads, repeated on the body, 6.5cm wide

Provenance : Purchased James Robinson, 58th Street New York 10022

€ 200 - 300



383 AN EARLY 19TH CENTURY BLUE AND WHITE TRANSFER PRINTED TUREEN, applied with moulded scroll handles and decorated with continuous band of chinoiserie. 30cm wide over handles; together with a 19th century Copeland Spode centre dish of squared form and similar decoration. 13cm squared; and three 19th century oval sweet meat dishes of similar design

€ 300 - 400



385 A BELLEEK CHINA FIRST PERIOD OVAL COVERED AND TWIN HANDLED LATTICEWORK BASKET, with naturalistic scrolling vine handles, decorated to rim and cover with blooming foliage, wild roses, shamrock, etc. 33cm wide over handles

€ 500 - 800



386 A 19TH CENTURY CHINESE PADOUK SQUARE COFFEE TABLE with pierced frieze, raised on square supports. 90 x 89cm

€ 250 - 350

387 A CHINESE FRUITWOOD NEST OF QUARTETTO TABLES, with fielded tops raised above pierced and carved aprons and raised on square legs and stretchers. Top 44 x 33cm

€ 300 - 400



388 A CHINESE FRUITWOOD NEST OF QUARTETTO TABLES, with moulded tops above leaf carved aprons, curved shoulders and raised on square legs. Top 46 x 32cm

€ 300 - 400



- 389 A LARGE CHINESE SCROLL PAINTING, in Ming style, painted with court figures in a garden landscape, and bearing Chinese inscription and seal to top right hand corner. 168 x 94cm; together with a horizontal example, painted with eight individual male and female figures, in traditional costume, including musicians, dancers, warriors, etc. 67 x 427cm

€ 1,000 - 2,000



- 390 A CHINESE BLACK AND GILT LACQUERED SQUARE LOW OCCASIONAL TABLE, the top decorated with figural motifs and raised on square supports. 106cm square x 42cm high

€ 300 - 500



391 A GEORGE III LACQUERED HANGING CORNER CABINET, decorated with chinoiserie against an ebonised ground. 92cm x 56cm

€ 1,000 - 2,000



392 A GEORGIAN WALNUT AND BEECH CHEST ON STAND, basically 18th century, with moulded top above two short and three long drawers fitted with brass bracket handles, on cupped tapering supports joined by rectangular H-shaped stretcher, on bun feet. 89cm wide x 145cm high

€ 400 - 600

393

A 19TH CENTURY INLAID MAHOGANY LONGCASE CLOCK

with architectural pediment and blind fret frieze, the engraved brass dial flanked by fruited pillars, the case with quarter reeded pillasters, boxwood stringing and raised on bracket feet. 237cm high

€ 1,000 - 1,500



394

A GEORGE IV MAHOGANY SECRETAIRE BOOKCASE,

the moulded cornice with a band of Greek Key decoration, above twin oval astragal glazed doors and secretaire with cupboard base, opening to reveal a compartmented interior with fold-out baize-lined writing surface. 93cm wide

€ 1,000 - 1,500



395 A PAIR OF ENGRAVINGS AFTER LANDSEER (19TH CENTURY)
Boys riding ponies in parklands
Each 54 x 65cm, in maple frames

€ 300 - 500

396 A 19TH CENTURY INLAID MAHOGANY LONGCASE CLOCK,
the arch top hood enclosing a white enamel dial, the rectangular case raised
on bracket feet. 206cm high

€ 400 - 600



397 A VICTORIAN LOUIS QUATORZE EBONISED
TIMBER AND BOULLE RECTANGULAR SIDE
CABINET,
embellished with applied cast brass banding and arabesques.
82cm wide, 109cm high, 36cm deep

€ 500 - 800





398 SCOTTISH SCHOOL C.1840
Half-length portrait of a young Gentleman
Oil on canvas, 76 x 64cm

€ 1,000 - 1,500



399 A VICTORIAN MAHOGANY RECTANGULAR CONSOLE TABLE,
the top with leaf carved spiral reeded border, raised on Ionic style columns, the back panel with two
shelves and raised on platform base. 122 x 48 x 93cm high

€ 500 - 800



400 WILLIAM MASON (1906-2002)
Boats in the Bay
Oil on board, 29 x 43cm
Signed

€ 400 - 600



402 DANIEL MACDONALD (1821-1853)
Boy in a Landscape
Pen and ink, 30 x 33cm
Signed and dated 1844

€ 300 - 500



401 H. RALEIGH
West of Ireland Coastal Landscape
Oil on canvas, 40 x 50cm
Signed

€ 300 - 500



403 RICHARD HENRY KITSON (20TH CENTURY)
Coastal Scene, Fishing for Cockles
Watercolour, 44 x 50cm
Signed

€ 400 - 600



404 R. WERNIER
Trasteverina (Roman Costume)
Watercolour, 24 x 15cm
Signed

€ 100 - 150



406 MARIE CARROLL (20TH/21ST
CENTURY)
The Shelbourne
Oil on paper, 48 x 71cm
Signed

€ 500 - 800



405 FREDERIC CARVILLE (20TH CENTURY)
Extensive Lake and Mountain Landscape
Oil on canvas, 76 x 127cm
Signed

€ 500 - 800



407 GEORGE SHALDERS (1826-1873)
Driving the Cattle Homewards, Sunset
Glengarriff
Oil on canvas, 30 x 50cm
Signed

€ 300 - 500



408 ENGLISH SCHOOL 19TH CENTURY
The 21st Lancers on Manoeuvres
Oil on canvas, 30 x 59cm

€ 800 - 1,200

410 ROBERT HUGH BUXTON (B.1871)
Haystacks
Oil on canvas, 44 x 63cm
Signed

€ 500 - 700



411 ENGLISH SCHOOL (EARLY 20TH CENTURY)
Ploughing Scene
Oil on board, a pair, 29 x 38cm (2)

€ 300 - 500



412 ROBERT HUGH BUXTON (B.1871)
Figures Shearing Sheep in a Barn Interior
Oil on canvas, 52 x 70cm
Signed

€ 400 - 600

413 BASIL NIGHTINGALE (1864-1940)
Ambush II, Winner of the Grand National, The
Property of His Majesty the King
Pencil, 26.5 x 40cm
Signed, dated '1902' and inscribed with title

€ 200 - 300



415 BERNARD ADENEY (1878-1966)
Cavalaire, Provence
Oil on board,
Inscribed 'Bernard Adeney b1878, President
of London Group 1921-23 "Cavalaire"
(Provence)

€ 300 - 500



416 AN ANTIQUE BAKTHIAR KELLI (RUNNER), originating in Chahar Mahal, West Persia, c.1890-1910, the field with large Herati design within a border of flowerheads and rosettes, linked by vines between double floral meandering guard stripes in a shaded navy blue ground. 405 x 153cm

€ 1,000 - 1,500

417A A SEMI-ANTIQUÉ TABRIZ STYLE WOOL RUG, the deep red ground with central medallion and foliate field within multiple borders and guard stripes. c.368 x 258.5 cm

€ 400 - 600



417 A NORTH WEST PERSIAN BIBIKIBAD WOOL CARPET, the large rectangular blue ground woven with a lozenge shaped medallion, filled with flower heads and scrolling foliage and contained within a narrow chevron boarder, multiple guard stripes and side boards. 340 x 275cm

€ 300 - 500



418 A VICTORIAN MAHOGANY BREAKFRONT BOOKCASE,
with moulded cornice above four tall arch top glazed doors, flanked by scroll corbals and raised on a
base fitted with one long and two short drawers on platform base. 214cm wide, 243cm high

€ 2,000 - 3,000



419

A 19TH CENTURY INLAID MAHOGANY DWARF CORNER CUPBOARD,

the top with satinwood cross banding and radial stringing above a curved single panel door, decorated with a bow and arrows and flanked by side panels decorated with figures in the Renaissance style above a single drawer and twin dummy drawers on splayed legs. 65cm wide, 46cm deep, 82.5cm high

€ 200 - 400

420

AN EDWARDIAN MAHOGANY WARDROBE

of compact proportions, with dentil cornice above twin astragal glazed panel doors and raised on bracket feet. 121cm wide, 183cm high

€ 300 - 500



421

AN EARLY 19TH CENTURY SHERATON STYLE INLAID MAHOGANY SERPENTINE FRONT SIDEBOARD,

the crossbanded top above three drawers and twin cupboard doors, applied with lion mask handles, the centre with slide, raised on square tapering supports. 95cm high, 200cm long, 580cm wide

€ 1000 - 1500





422

A 19TH CENTURY WALNUT AND PARCEL GILT WALL MIRROR IN MID-GEORGIAN STYLE, the shaped rectangular plate surmounted with a ho ho bird and incised gilt scroll work over pierced wavy apron. 102cm high

€ 200 - 300

423

A VICTORIAN STYLE LOUIS XIV EBONY AND FAUX BOULLE SQUARE TOP GAMES TABLE, the top with inlaid chess board within an arabesque panelled border, with brass banding and female figural mounts, raised on cabriole legs terminating in hoof capped feet. 81cm square

€ 1,200 - 1,800



424

A LOUIS XVI VERNIS MARTIN STYLE DISPLAY CABINET, with glazed door and fitted interior, decorated with gilt metal mounts throughout, and figural landscape painted panels with brass rococo mounts, raised on short cabriole legs. 165cm x 88cm

€ 1,000 - 1,500



425

A PAIR OF 19TH CENTURY FRENCH
STYLE GILDED ARMCHAIRS,
each with padded back surmounted by a shell
moulded rim and upholstered in silk striped floral
damask, and raised on cabriole legs terminating in
shell feet

€ 800 - 1,200



426

AN EDWARDIAN UPHOLSTERED LONG DAY
BED
with button back and loose squab cushion raised on
upturned bell supports. 175cm long, 74cm wide

€ 80 - 120



427

A 19TH CENTURY MAHOGANY
RECTANGULAR CABINET-TOP,
with moulded cornice above twin fielded panel
doors with shelved interior. 82cm wide x 77cm
high

€ 60 - 100



428

AN EDWARDIAN INLAID MAHOGANY
NINE PIECE SALON SUITE,
comprising a three seat settee, two armchairs,
four side chairs and two low chairs, each with
arched marquetry inlaid backs, upholstered in a
crimson floral damask.

€ 500 - 800



429 A PERSIAN WOOL CARPET, 20th century, with broad rectangular field woven with multiple lozenges filled with leaves and flowerheads, contained within guard stripe borders. 206 x 160cm

€ 300 - 500



431 A PERSIAN MEHRABAN WOOL CARPET, 20th century, the large rectangular field woven with three floral groups against a salmon pink ground, contained within crimson and deep blue borders. 165 x 83cm; together with a Persian Quasqai wool rug, woven in brown and beige tones with central interlinked lozenges and geometric borders. 155 x 116cm; also with a South American flat weave kilim. (3)

€ 400 - 600



430 A LARGE TURKISH WOOL RUNNER, 20th century, the narrow centre field woven with multiple hooked lozenges against a red ground, within gul borders. 480 x 83cm

€ 300 - 500



432 A LARGE PERSIAN RED GROUND WOOL CARPET, 20th century, the central field woven with large medallion and set with urns to each corner, within broad and narrow borders. 392 x 296cm

€ 500 - 800



433 A LARGE TURKANAN WOOL CARPET, in the Bokara style, 20th century, the large rectangular field woven with guls and hooked medallions in geometric formation, contained within narrow line borders. 378cm

€ 600 - 1,000



435 AN AUBUSSON STYLE NEEDLEPOINT, on cream ground with burgundy borders. 360 x 267cm

Provenance: Ardbraccan House, Navan, Co Meath

€ 300 - 500



434 A CAUCASIAN KAZAK WOOL RUG, the large rectangular field woven with three interlinked lozenges filled with geometric motifs in navy blue tones against a deep red ground, 254 x 75cm

€ 250 - 350



436 A GEORGE III MAHOGANY FRAMED PIERCED LADDER BACK ELBOW CHAIR with outswept armrests, padded seat and raised on chamfered square supports.

€ 120 - 160



437 ORTELIUS (ABRAHAM)
Mid 17th century European, Sive Celticam
Veteram
Double page engraved map, 348 x 470
Unframed

€ 500 - 1,000



439 IGOR TALWINSKI (POLISH, 1907-1987)
Half-length Portrait of a Nude Girl Holding a Blue
Drape
Oil on canvas, 51 x 61cm
Signed

€ 1,500 - 2,000



438 PHILIPPA BAYLISS (B.1940)
Self Portrait in a Kitchen Interior
Watercolour, 22.5 x 15cm
Signed and dated 1980

€ 300 - 400



440 A SMALL 19TH CENTURY MAHOGANY
BOWFRONT CHEST,
of two short drawers and two long drawers,
with brass drop handles, raised on bracket feet.

91cm wide x 52cm tall

€ 100 - 200



441

A VICTORIAN MAHOGANY TWO-DOOR BOOKCASE,

the moulded cornice above a pair of cross-glazed doors centred with floral motifs and enclosing adjustable shelves, the base with twin pulvinated drawers over cupboard section and pillar supports and plinth base. 114cm wide

€ 800 - 1,200

442

A REGENCY MAHOGANY FRAMED BERGERE ARMCHAIR

with reeded rim, padded armrests, cane seat, back and sides and raised on square tapering legs.

€ 150 - 200





443 A 19TH CENTURY MAHOGANY LARGE CHEST ON CHEST, with moulded cornice above four short and three long cockbeaded drawers on a base fitted two long deep drawers with brass drop handles and raised on bracket feet. 132cm wide x 65cm diameter x 169cm high

€ 800 - 1,200

444 A GEORGE IV MAHOGANY FRAMED CURVED RAIL BACK ELBOW CHAIR with reeded decoration, padded seat and raised on turned tapering legs.

€ 100 - 150





445 A VICTORIAN MAHOGANY FRAMED CORNER ARMCHAIR of robust construction with padded seat, raised on turned baluster legs.

€ 100 - 200



447 A SHAPED TRIANGULAR CAST BRASS TRIVET, and two brass fire implements with urn handles (3)

€ 200 - 400



446 A 19TH CENTURY BRASS FRAMED FOLDING 'X' FORM DRESSING STOOL, with turned timber mounted side handles and plush covered seat.

€ 150 - 250



448 AN EARLY 19TH CENTURY IRON AND BRASS FIRE GRATE, of serpentine form, the domed top above pierced brass frieze with bar grill flanked by urns, raised on square tapering supports. 74 x 72cm

€ 2,000 - 3,000



449 A LATE VICTORIAN MAHOGANY FOUR TIER WHATNOT, of rectangular form with serpentine sides and bobbin turned supports. 120cm high, 57cm wide
€ 80 - 120



452 A SET OF SIX EDWARDIAN SHERATON STYLE MAHOGANY DINING CHAIRS, each with inlaid top rail above a pierced cross-bar and padded seat upholstered in floral damask, on squared tapering legs with h-shape stretcher.
€ 200 - 400



450 A VICTORIAN WALNUT AND MARQUETRY INLAID OVAL BREAKFAST TABLE, c.1870, the moulded quarter veneered top decorated with a band of interlinked leaves and tendrils, on turned support and downswept legs. 149cm wide
€ 400 - 600



453 A VICTORIAN THREE-TIER ROSEWOOD WHATNOT, of compact size, with serpentine platforms joined by bobbin turned supports on baluster legs and brass castors. 38cm wide, 90cm high
€ 100 - 150



451 AN EARLY VICTORIAN MAHOGANY LIBRARY TABLE, c.1840, of rectangular form, the plain top with thumb moulded rim, supported on twin tapering columns and carved paw feet. 143cm wide, 68cm deep
€ 300 - 500



454 AFTER FRANCIS WHEATLEY (1747-1801) The Cries of London Stipple engraving, 39 x 27cm A set of thirteen contained in Verre Eglomise and timber frames
€ 500 - 800



455

A GROUP OF 18TH & 19TH CENTURY SCIENTIFIC INSTRUMENTS

including a timber cased protractor set dated 1765, a shark skin cased geometry set, a cased mercury thermometer etc.

€ 200 - 300



456

A COLLECTION OF FOUR EARLY BULLET MOULDS, of graduated sizes; together with a double-ended brass powder measure, etc. (5)

€ 100 - 150

General Terms and Conditions of Business

The Auctioneer carries on business on the following terms and conditions and on such other terms or conditions as may be expressly agreed with the Auctioneer or set out in any relevant Catalogue. Conditions 12-21 relate mainly to buyers and conditions 22-32 relate mainly to sellers. Words and phrases with special meanings are defined in condition 1. Buyers and sellers are requested to read carefully the Cataloging Practice and Catalogue Explanation contained in condition 2.

DEFINITIONS AND GENERAL CONDITIONS

DEFINITIONS

1. In these conditions the following words and expressions shall have the following meanings:
'Auctioneer' – James Adam & Sons.
'Auctioneer's Commission' – The commission payable to the Auctioneer by the buyer and seller as specified in conditions 13 and 25.

'Catalogue' – Any advertisement, brochure, estimate, price list or other publication.

'Forgery' – A Lot which was made with the intention of deceiving with regard to authorship, culture, source, origin, date, age or period and which is not shown to be such in the description therefore in the Catalogue and the market value for which at the date of the auction was substantially less than it would have been had the Lot been in accordance with the Catalogue description.

'Hammer Price' – The price at which a Lot is knocked down by the Auctioneer to the buyer.

'Lot' – Any item which is deposited with the Auctioneer with a view to its sale at auction and, in particular, the item or items described against any Lot number in any Catalogue.

'Proceeds of Sale' – The net amount due to the seller being the Hammer Price of the Lot after deducting the Auctioneer's Commission thereon under condition 25 the seller's contribution towards insurance under condition 26, such VAT as is chargeable and any other amounts due by the seller to the Auctioneer in whatever capacity howsoever arising.

'Registration Form or Register' – The registration form (or, in the case of persons who have previously attended at auctions held by the Auctioneer and completed registration forms, the register maintained by the Auctioneer which is compiled from such registration forms) to be completed and signed by each prospective buyer or, where the Auctioneer has acknowledged pursuant to condition 12 that a bidder acting as agent on behalf of a named principal, each such bidder prior to the commencement of an auction.

'Sale Order Form' – The sale order form to be completed and signed by each seller prior to the commencement of an auction.

'Total Amount Due' – The Hammer Price of the Lot sold, the Auctioneer's Commission due thereon under condition 13, such VAT as is chargeable and any additional interest, expenses or charges due hereunder.

'V.A.T.' – Value Added Tax.

Cataloguing Practice and Catalogue Explanations

2. Terms used in Catalogues have the following meanings and the Cataloguing Practice is as follows:

The first name or names and surname of the artist;
In the opinion of the Auctioneer a work by the artist.

The initials of the first name(s) and the surname of the artist;
In the opinion of the Auctioneer a work of the period of the artist and which may be in whole or in part the work of the artist.

The surname only of the artist;
In the opinion of the Auctioneer a work of the school or by one of the followers of the artist or in his style.

The surname of the artist preceded by 'after';
In the opinion of the Auctioneer a copy of the work of the artist.
'Signed'/'Dated'/'Inscribed';
In the opinion of the Auctioneer the work has been signed/dated/inscribed by the artist.
'With Signature'/'with date'/'with inscription';
In the opinion of the Auctioneer the work has been signed/dated/inscribed by a person other than the artist.

'Attributed to';
In the opinion of the Auctioneer probably a work of the artist.

Studio of/Workshop of
In the opinion of the Auctioneer a work executed in the studio of the artist and possibly under his supervision.

'Circle of';
In the opinion of the Auctioneer a work of the period of the artist and showing his influence.

'Follower of';
In the opinion of the Auctioneer a work executed in the artist's style yet not necessarily by a pupil.

'Manner of';
In the opinion of the Auctioneer a work executed in artist's style but of a later date.

None of the terms above are appropriate but in the Auctioneer's opinion the work is a work by the artist named.

GENERAL CONDITIONS

Auctioneer Acting as Agent

3. The Auctioneer is selling as agent for the seller unless it is specifically stated to the contrary. The Auctioneer as agent for the seller is not responsible for any default by the seller or the buyer.

Auctioneer Bidding on behalf of Buyer

4. It is suggested that the interests of prospective buyers are best protected and served by the buyers attending at an auction. However, the Auctioneer will, if instructed, execute bids on behalf of a prospective buyer. Neither the Auctioneer nor its employees, servants or agents shall be responsible for any neglect or default in executing bids or failing to execute bids.

Admission to Auctions

5. The Auctioneer shall have the right exercisable in its absolute discretion to refuse admission to its premises or attendance at its auctions by any person.

Acceptance of Bids

6. The Auctioneer shall have the right exercisable in its absolute discretion to refuse any bids, advance the bidding in any manner it may decide, withdraw or divide any Lot, combine any two or more Lots and, in the case of a dispute, to put any Lot up for auction again.

Indemnities

7. Any indemnity given under these conditions shall extend to all actions, proceedings, claims, demands, costs and expenses whatever and howsoever incurred or suffered by the person entitled to the benefit of the indemnity and the Auctioneer declares itself to be a trustee of the benefit of every such indemnity for its employees, servants or agents to the extent that such indemnity is expressed to be for their benefit.

Representations in Catalogues

8. Representations or statements made by the Auctioneer in any Catalogue as to contribution, authorship, genuineness, source, origin, date, age, provenance, condition or estimated selling price or value is a statement of opinion only. Neither the Auctioneer nor its employees, servants or agents shall be responsible for the accuracy of any such opinions. Every person interested in a Lot must exercise and rely on their own judgment and opinion as to such matters.

9. The headings of the conditions herein contained are inserted for convenience of reference only and are not intended to be part of, or to effect, the meaning or interpretation thereof.

Governing Law

10. These conditions shall be governed by and construed in accordance with Irish Law.

Notices

11. Any notice or other communication required to be given by the Auctioneer hereunder to a buyer or a seller shall, where required, be in writing and shall be sufficiently given if delivered by hand or sent by post to, in the case of the buyer, the address of the buyer specified in the Registration Form or Register, and in the case of the seller, the address of the seller specified in the Sale Order Form or to such other address as the buyer or seller (as appropriate) may notify the Auctioneer in writing. Every notice or communication given in accordance with this condition shall be deemed to have been received if delivered by hand on the day and time of delivery and if delivered by post three (3) business days after posting.

The Buyer

12. The buyer shall be the highest bidder acceptable to the Auctioneer who buys at the Hammer Price. Any dispute which may arise with regard to bidding or the acceptance of bids shall be settled by the Auctioneer. Every bidder shall be deemed to act as principal unless the Auctioneer has prior to the auction, acknowledged in writing that a bidder is acting as agent on behalf of a named principal.

Commission

13. The buyer shall pay the Auctioneer a commission at the rate of 20%, exclusive of V.A.T..

Payment

14. Unless credit terms have been agreed with the Auctioneer before the auction the buyer of a Lot shall pay to the Auctioneer within one (1) day from the date of the auction the Total Amount Due. Notwithstanding this, the Auctioneer may, in its sole discretion, require a buyer to pay a deposit of 25% of the Total Amount Due at the conclusion of the auction.

The Auctioneer may apply any payments received by a buyer towards any sums owing from that buyer to the Auctioneer on any account whatever regardless of any directions of the buyer or his agent in that regard whether express or implied.

The Auctioneer shall only accept payment from successful bidders in cash or by the bidder's own cheque. Cheques drawn by third parties, whether in the Auctioneer's favour or requiring endorsement, shall not be accepted.

Reservation of Title

15. Notwithstanding delivery or passing of risk to the buyer the ownership of a Lot shall not pass to the buyer until he has paid to the Auctioneer the Total Amount Due.

Collection of Purchases

16. The buyer shall at his own expense collect the Lot purchased not later than seven (7) days after the date of the auction but (unless credit terms have been agreed with the Auctioneer pursuant to condition 14) not before payment to the Auctioneer of the Total Amount Due.

The buyer shall be responsible for any removal, storage and insurance charges in respect of any Lot which is not taken away within seven (7) days after the date of the auction.

The purchased Lot shall be at the buyer's risk in all respects from the earlier of the time of collection or the expiry of one (1) day from the date of the auction. Neither the Auctioneer nor its employees, servants or agents shall thereafter be liable for any loss or damage of any kind howsoever caused while a purchased Lot remains in its custody or control after such time.

Packaging and Handling of Purchased Lots

17. Purchased Lots may be packed and handled by the Auctioneer, its employees, servants or agents. Where this is done it is undertaken solely as a courtesy to buyers and at the discretion of the Auctioneer. Under no circumstances shall the Auctioneer, its employees, servants or agents be liable for damage of any kind and howsoever caused to glass or frames nor shall the Auctioneer be liable for the errors or omissions of, or for any damage caused by, any packers or shippers which the Auctioneer has recommended.

Non-Payment or Failure to Collect Purchased Lots

18. If a buyer fails to pay for and/or collect any purchased Lot by the dates herein specified for payment and collection the Auctioneer shall, in its absolute discretion and without prejudice to any other rights or remedies it may have, be entitled to exercise one or more of the following rights or remedies without further notice to the buyer:

- (a) To issue court proceedings for damages for breach of contract;
- (b) To rescind the sale of that Lot or any other Lots sold to the buyer whether at that or at any other auction;
- (c) To resell the Lot or cause it to be resold whether by public auction or private sale. In the event that there is a deficiency between the Total Amount Due by the buyer and the amount received by the Auctioneer on such resale after deduction of any necessary expenses the difference shall be paid to the Auctioneer by the buyer. Any surplus arising shall belong to the seller.
- (d) To store (whether at the Auctioneer's premises or elsewhere) and insure the purchased Lot at the expense of the buyer.
- (e) To charge interest on the Total Amount Due at the rate of 2% over and above the base rate from time to time of Bank of Ireland or if there be no such rate, the nearest equivalent thereto as determined by the Auctioneer in its absolute discretion from the date on which payment is due hereunder to the date of actual payment.
- (f) To retain that Lot or any other Lot purchased by the buyer whether at the same or any other auction and release same to the buyer only after payment to the Auctioneer of the Total Amount Due.
- (g) To apply any sums which the Auctioneer received in respect of Lots being sold by the buyer towards settlement of the Total Amount Due.
- (h) To exercise a lien on any property of the buyer in the possession of the Auctioneer or whatever reason.

Liability of Auctioneer and Seller

19. Prior to auction ample opportunity is given for the inspection of the Lots on sale and each buyer by making a bid acknowledges that he has, by exercising and relying on his own judgment, satisfied himself as to the physical condition, age and Catalogue description of each Lot (including but not restricted to whether the Lot is damaged or has been repaired or restored). All Lots are sold with all faults and imperfections and errors of description. None of the seller, the Auctioneer nor any of their employees, servants or agents shall be responsible for any error of description or for the condition or authenticity of any Lot. No warranty whatsoever is given by the seller or Auctioneer or by any of their employees, servants or agents in respect of any Lot and any condition or warranty express or implied by statute or otherwise is hereby specifically excluded.

Forgeries

20. Any amount paid by a buyer in respect of a Lot which, if it is proved within three (3) years of the date of the auction at which it was purchased, to have been a Forgery shall be refunded to the seller subject to the provisions hereof, provided that:

- (a) The Lot has been returned by the buyer to the Auctioneer within three (3) years of the date of the auction in the same condition in which it was at the time of the auction together with evidence proving that it is a Forgery, the number of the Lot and the date of the auction at which it was purchased;
- (b) The Auctioneer is satisfied that the Lot is a Forgery and that the buyer has and is able to transfer good and marketable title to the Lot free from any third party claims;

FURTHER PROVIDED THAT the buyer shall have no rights hereunder if:
(i) The description of the Lot in the Catalogue at the time of the auction was in accordance with the then generally accepted opinion of scholars or experts or fairly indicated that there was a conflict of such opinion;

- (ii) The only method of establishing at the time of the auction in question that the Lot was a Forgery would have been by means of scientific processes which were not generally accepted for use until after the date of the auction or which were unreasonably expensive or impractical.

The buyer's sole entitlement under this condition is to a refund of the actual amount paid by him in respect of the Lot. Under no circumstances shall the Auctioneer be liable for any damage, loss (including consequential, indirect or economic loss) or expense suffered or incurred by the buyer by reason of the Lot being a Forgery.

The benefit of this condition shall be solely and exclusively for the buyer and shall not be assignable. The buyer shall for the purpose of this con

Photographs

21. The buyer authorises the Auctioneer at any time to make use of any photographs or illustrations of the Lot purchased by the buyer for such purposes as the Auctioneer may require.

CONDITIONS WHICH MAINLY CONCERN THE SELLER

Auctioneer's Discretion

22. With regard to the sale of any Lot the Auctioneer shall have the following powers exercisable solely in the discretion of the Auctioneer:

- (i) To decide whether to offer any Lot for sale or not;
- (ii) To decide whether a particular Lot is suitable for sale by the Auctioneer and, if so, to determine which auction, the place and date of sale, the conditions of sale and the manner in which such sale should be conducted;
- (iii) To determine the description of any Lot in a Catalogue.
- (iv) To decide whether the views of any expert shall be obtained and to submit Lots for examination by any such experts.
- (v) To determine what illustration of a Lot (if any) is to be included in the Catalogue.

Seller's Warranty and Indemnity

23. The seller warrants to the Auctioneer and to the buyer that he is the true owner of the Lot or is legally authorised to sell the Lot on behalf of the true owner and can transfer good and marketable title to the Lot free from any third party claims. As regards Lots not held by the Auctioneer on its premises or under its control the seller warrants and undertakes to the Auctioneer and the buyer that the Lot will be available and in a deliverable state on demand by the Auctioneer or buyer. The seller shall indemnify the Auctioneer and the buyer or any of their respective employees, servants or agents against any loss or damage suffered by any of them in consequence of any breach of the above warranties or undertakings by the seller.

Reserves

24. Subject to the Auctioneer's discretion, the seller shall be entitled prior to the auction to place a reserve on any Lot. All reserves must be agreed in advance by the Auctioneer and entered on the Sale Order Form or subsequently be confirmed in writing to the Auctioneer prior to auction. This also applies to changes in reserves. A reserve may not be placed upon any Lots under IRE100 in value. The reserve shall be the minimum Hammer Price at which the Lot may be sold by the Auctioneer. A reserve once in place may only be changed with the consent of the Auctioneer. A commission shall be charged on the 'knock-down' bid for Lots which fail to reach the reserve price. Such commission shall be 5% of the 'knock-down' bid. This commission and any VAT payable thereon must be paid before removal of the Lot after the auction. The minimum commission hereunder shall be IR £25. The Auctioneer may in its sole discretion sell a Lot at a Hammer Price below the reserve therefore but in such case the Proceeds of Sale to which the seller shall be entitled shall be the same as they would have been had the sale been at the reserve.

Unless a reserve has been placed on a Lot in accordance with the provisions set out above such Lot shall be put up for sale without reserve.

In the event that any reserve price is not reached at auction then for so long as the Lot remains with the Auctioneer and to the extent that the Lot has not been re-entered in another auction pursuant to condition 31 the seller authorises the Auctioneer to sell the Lot by private treaty at not less than the reserve price. The Auctioneer shall ensure that in such a case those conditions herein which concern mainly the buyer shall, with any necessary modification, apply to such sale.

Commission

25. The seller shall pay the Auctioneer commission at the rate of 10% on the Hammer Price of all Lots sold on behalf of the seller at Irish Art Sales and 17.5% on the Hammer Price of all Lots sold on behalf of the seller at Fine Art, Wine and Militaria Sales together with V.A.T. thereon at the applicable rate. The seller authorises the Auctioneer to deduct from the Hammer Price paid by the buyer the Auctioneer's Commission under this condition; VAT payable at the applicable rates and any other amounts due by the seller to the Auctioneer in whatever capacity howsoever arising. The seller agrees that the Auctioneer may also receive commission from the buyer pursuant to condition 13.

Insurance

26. Unless otherwise instructed by the seller, all Lots (with the exception of motor vehicles) deposited with the Auctioneer or put under its control for sale shall automatically be insured by the Auctioneer under the Auctioneer's own fine arts policy for such sum as the Auctioneer shall from time to time in its absolute discretion determine. The seller

shall pay the Auctioneer a contribution towards such insurance at the rate of 1% of the Hammer Price plus VAT. If the seller instructs the Auctioneer not to insure a Lot then the Lot shall at all times remain at the risk of the seller who undertakes to indemnify the Auctioneer and hold the Auctioneer harmless against any and all claims made or proceedings brought against the Auctioneer of whatever nature and howsoever and wheresoever occurring for loss or damage to the Lot. The sum for which a Lot is covered for insurance under this condition shall not constitute and shall not be relied upon by the seller as a representation, warranty or guarantee as to the value of the Lot or that the Lot will, if sold by the Auctioneer, be sold for such amount. Such insurance shall subsist until such time as the Lot is paid for and collected by the buyer or, in the case of Lots sold which are not paid for or collected by the buyer by the due date hereunder for payment or collection such due date or, in the case of Lots which are not sold, on the expiry of seven (7) days from the date on which the Auctioneer has notified the seller to collect the Lots.

Rescission of Sale

27. If before the Auctioneer has paid the Proceeds of Sale to the seller the buyer proves to the satisfaction of the Auctioneer that the Lot sold is a Forgery and the requirements of condition 20 are satisfied the Auctioneer shall rescind the sale and refund to the buyer any amount paid to the Auctioneer by the buyer in respect of the Lot.

Payment of Proceeds of Sale

28. The Auctioneer shall remit the Proceeds of Sale to the seller not later than thirty (30) days after the date of the auction, provided however that, if by that date, the Auctioneer has not received the Total Amount Due from the buyer then the Auctioneer shall remit the Proceeds of Sale within seven (7) working days after the date on which the Total Amount Due is received from the buyer. If credit terms have been agreed between the Auctioneer and the buyer the Auctioneer shall remit to the seller the Proceeds of Sale not later than thirty (30) days after the date of the auction unless otherwise agreed by the seller.

If before the Total Amount Due is paid by the buyer the Auctioneer pays the seller an amount equal to the Proceeds of Sale then title to the Lot shall pass to the Auctioneer.

If the buyer fails to pay the Auctioneer the Total Amount Due within fourteen (14) days after the date of the auction, the Auctioneer shall endeavour to notify the seller and take the seller's instructions on the course of action to be taken and, to the extent that it is in the sole opinion of the Auctioneer feasible, shall endeavour to assist the seller to recover the Total Amount Due from the buyer provided that nothing herein shall oblige the Auctioneer to issue proceedings against the buyer in the Auctioneer's own name. If circumstances do not permit the Auctioneer to take instructions from the seller or, if after notifying the seller, it does not receive instructions within seven (7) days, the Auctioneer reserves the right, and is hereby authorised by the seller at the seller's expense, to agree special terms for payments of the Total Amount Due, to remove, store and insure the Lot sold, to settle claims made by or against the buyer on such terms as the Auctioneer shall in its absolute discretion think fit, to take such steps as are necessary to collect monies due by the buyer to the seller and, if necessary, to rescind the sale and refund money to the buyer.

Payment of Proceeds to Overseas Sellers

29. If the seller resides outside Ireland the Proceeds of Sale shall be paid to such seller in Irish Pounds unless it was agreed with the seller prior to the auction that the Proceeds of Sale would be paid in a currency (other than Irish Pounds) specified by the seller in which case the Proceeds of Sale shall be paid by the Auctioneer to the seller in such specified currency (provided that that currency is legally available to the Auctioneer in the amount required) calculated at the rate of exchange quoted to the Auctioneer by its bankers on the date of payment.

Unsold Lots

31. Where any Lot fails to sell at auction the Auctioneer shall notify the seller accordingly and (in the absence of agreement between the seller and the Auctioneer to the contrary) such Lot may, in the absolute discretion of the Auctioneer, be re-entered in the next suitable auction unless instructions are received from the seller to the contrary, otherwise such Lots must be collected at the seller's expense within the period of thirty (30) days of such notification from the Auctioneer.

Upon the expiry of such period the Auctioneer shall have the right to sell such Lots by public auction or private sale and on such terms as the Auctioneer in its sole discretion may think fit. The Auctioneer shall be entitled to deduct from the price received for such Lots any sums owing to the Auctioneer in respect of such Lots including without limitation removal, storage and insurance expenses, any commission and expenses due in respect of the prior auction and commission and expenses in respect of the subsequent auction together with all reasonable expenses before remitting the balance to the seller. If the seller cannot be traced the balance shall be placed in a bank account in the name of the Auctioneer for the seller. Any deficit arising shall be due from the seller to the Auctioneer. Any Lots returned at the seller's request shall be returned at the seller's risk and expense and will not be insured in transit unless the Auctioneer is so instructed by the seller.

Auctioneer's Right to Photographs and Illustrations

32. The seller authorises the Auctioneer to photograph and illustrate any Lot placed with it for sale and further authorises the Auctioneer to use such photographs and illustrations and any photographs and illustrations provided by the seller at any time in its absolute discretion (whether or not in connection with the auction).

Catalogue illustrations are included at the discretion of the Auctioneer. Illustration charges will be calculated on the particular category of sale. These charges are subject to change. Irish Art Sale Illustrations: €150.00 full page, €100.00 half page, €50.00 other sizes. Fine Art Illustrations: Scaled fee: €100.00 for lots sold for €3,000.00 and over, hammer price, €50.00 for lots sold under €3,000.00 hammer price. All other sales: €25.00 per illustration. All lots illustrated and not sold are charged €25.00 per illustration.

VAT

34. It is presumed, unless stated to the contrary, that the items listed herein are auction scheme goods as defined in the Finance Act 1995.

35. Artist's Resale Rights (Droit de Suite)

Government Regulations (S.1. 312/2006)

Under this legislation a royalty (droit de suite) is payable to artists or the artist's heirs (if deceased in the last 70 years) of E.U. Nationality on all works resold for €3,000 or more, other than those sold by the artist or the artist's agent.

The resale royalty payable is calculated as follows:

From €3,000 to €50,000 4%
From €50,000.01 to €200,000 3%
From €200,000.01 to €350,000 1%
From €350,000.01 to €500,000 0.5%
Exceeding €500,000 0.25%

The total amount of royalty payable on any individual sale shall not exceed €12,500 The seller is liable for payment (paragraph 7.1 of Government Regulations (S.1. 312/2006) of this royalty on completion of the sale. The artist may request from the Auctioneer any information necessary to secure payment.

The Auctioneer will automatically deduct the amount due from the proceeds of sale and will hold in trust for the artist, their heirs or their representative for a period of 3 years from the date of sale. A vendor may choose to check the ARR Waiver on the Sale Receipt Contract indicating that they accept sole responsibility for the payment and authorises the Auctioneers to disclose their contact details to the artist, their heirs or their representative.

ADAM'S

Est. 1887



26 St. Stephen's Green, Dublin 2 +353 (0)1 6760261 www.adams.ie